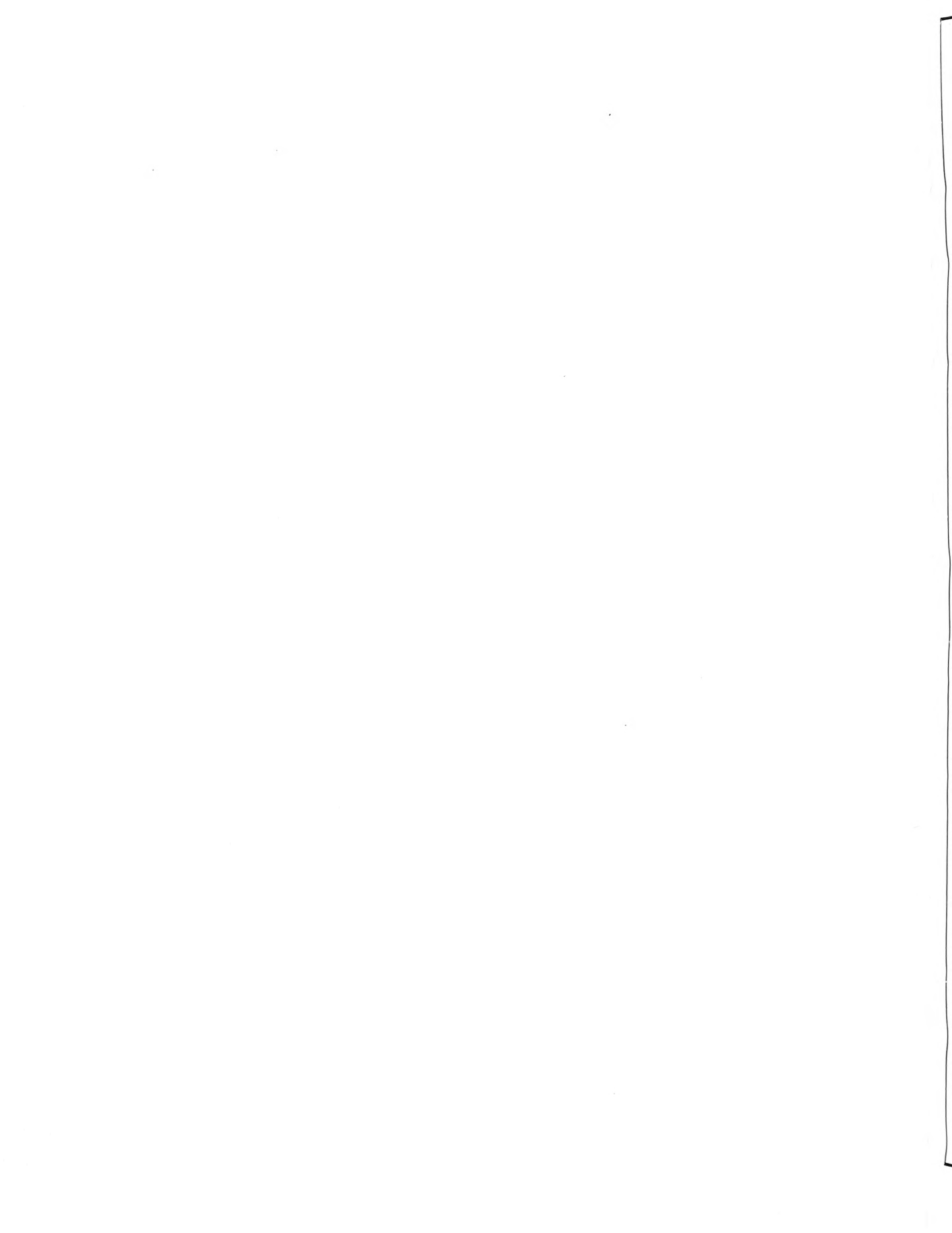


Historic, Archive Document

Do not assume content reflects current scientific knowledge, policies, or practices.



Q.61



Bulbs ADVANCE OFFERING
1 9 2 7

STUMPP & WALTER CO.

30 & 32 BARCLAY ST., NEW YORK

D. N. Shoemaker



A hardy border illustrating the use of Darwin Tulips, planted in clumps throughout

GIANT DARWIN TULIPS, May-Flowering

For the herbaceous border, massed in clumps along the edge of shrubbery, or as cut-flowers for vases, these are conceded to be the superior of all the Tulips

The enthusiasm for the Darwin Tulip is not due to fad or popular fancy, but rather to an awakened sense of appreciation of their majestic beauty. The rich, bright colors of the blooms, their somber tones, their many pale and more lovely colors, produced on strong, gigantic stems from 2 to 3 feet, all vie with one another and capture even the casual observer of spring-flowering bulbs. Once grown, the amateur becomes interested and soon becomes a fancier with a hoard of varieties, excusably jealous of every one he or she grows.

For the borders among other hardy flowers, in formal gardens in conjunction with Single Early Tulips, for isolated groupings against a background of shrubs, or for combinations of delicate colors for effects of contrast in the flower-garden, the Darwins are without a peer.

They range in color from the daintiest pink, rose, salmon, red, etc., to deep, rich crimson; from lavender through mauve and light blue to violet-purple and the so-called "Black Tulip." There are a few good whites, but no clear yellow, and where this color is desired, selection should be made from the Cottage Tulips listed on pages 10 and 11. All buff and bronze shades frequently classed as Darwins are Breeders.

CULTURE.—Bulbs should be planted 5 to 6 inches deep and not less than 5 inches apart. Sand to the depth of 1/2 inch at the base of the bulbs will amply repay the trouble by the provision for drainage during wet weather. For forcing, bulbs should be planted as soon as received, and the flowers appear to better advantage if pots a trifle deeper than the ordinary bulb-pans are used. We recommend what are termed azalea-pots for this purpose. A temperature of 55 to 60 degrees is recommended, for if allowed to "come gently," larger flowers and longer stems may be had.

Afterglow. Deep, rosy orange, with salmon shading at edges of petals; inside deep orange with yellowish base. A sport of Baronne de la Tonnaye, which is of remarkable interest because it is the first instance of a Darwin sporting to the Breeder tones. A showy Tulip for outdoors. Height 26 inches. \$1 30 \$10 00 \$98 00

Anton Mauve. A splendid exhibition variety on account of its wonderful stately habit. The flower is of unusually large size, and an even tone of deep bluish lilac. Excellent for the border or for pots. Height 32 inches. 1 30 10 00 98 00

Aphrodite. Clear, silvery rose-pink with white base; a good-sized round flower of exquisite color on a very tall, stiff stem. Height 34 inches. 2 00 15 00

Baronne de la Tonnaye. A long beautiful flower; clear carmine-rose at the midrib, base toning off to soft pink at the edges; white, tinged blue. Excellent for early March forcing and just as fine for outdoor beds, where it keeps up a splendid show for a long time. Height 26 inches. 60 4 00 38 00

Bartigon. Fiery crimson, a very showy variety with white base. Height 26 inches \$0 70 \$5 00 \$48 00

Bleu Celeste. A Tulip of wonderful size and shape; the color is a bright violet-purple, white base tinged blue. Height 30 inches 4 00 30 00

Carl Becker. Pale rosy violet, with center flushed salmon-rose. Splendid Darwin for outdoors; equally good for forcing, but paler in color. Height 32 inches. 70 5 00 48 00

Centenaire. Rich violet-rose, with a large blue center; immense flower of perfect form. Magnificent for the border; excellent for forcing. Height 32 in. 70 5 00 48 00

City of Haarlem. Intense dark scarlet with darker bloom; large steel-blue base and white halo; wonderful cup-shaped flower, with petals incurving slightly at the tips. One of the finest brilliant red Darwins. Height 27 inches . . 3 50 25 00

Clara Butt. Beautiful clear salmon-pink. No other variety offered by us has the same distinctive and pleasing color. Height 22 inches 50 3 50 32 00

Giant Darwin Tulips (May-Flowering), continued

Dal Ongaro. Pale lavender-violet, inside dark bluish violet, shading off into paler violet; large flower with pure white base and showy white midrib. Height 28 inches.....	Doz.	100	1,000	
		\$0 85	\$6 00	\$58 00
Dream. Large flower, perfect in form, on a tall, strong stem; color rosy lilac and mauve, with claret-purple interior. Height 24 inches.....		60	4 00	38 00
Duchess of Hohenberg. Pale slaty lilac-mauve, with stripe of rosy heliotrope; inside pale lilac, with white base. Enormous, long flower on a tall, stiff stem. Height 29 inches.		2 00	15 00	
Eclipse. A deep rich glowing blood-red. Large flower of fine form; the best of its color. Height 26 inches.....		2 00	15 00	
Edmee (Beauty). A beautiful shade of cherry-rose with a lighter border. On the order of Baronne de la Tonnaye, but brighter in color. Height 25 inches.....		85	6 00	58 00
Euterpe. A beautiful shade of mauve, edged lilac, white center, with a blue halo. A very refined color when forced. Height 26 in.....		70	5 00	48 00
Farncombe Sanders. A bright shade of scarlet, with a clear white base, contrasting well when the flower is fully open. A broad-petaled flower of large size. Fine for forcing or the border. Height 25 in.....		70	5 00	48 00
Faust. Satiny purple, with blue base; very large flower of fine form; a splendid Tulip. Height 30 inches....	Doz.	100	1,000	
		\$1 10	\$8 00	\$78 00
Flamingo. An even tone of pale shell-pink. A very exquisitely colored Darwin, of refined coloring and form. Height 28 inches.		1 00	7 00	68 00
Frans Hals. Splendidly formed, very large flower; bright bluish-violet, base blue, with white halo. Height 28 in.....		1 20	9 00	88 00
Giant. A flower of enormous size and of wonderful substance; a deep reddish purple in color, shaded violet with a white base. Height 30 in.....		2 00	15 00	
Glow. The deepest shade of crimson-scarlet—a color of wonderful brilliance, not unlike that of the Oriental poppy. The flowers are of large size, borne on stems 20 inches long....		70	5 00	48 00
Gryphus. Dark violet-purple, with a white base; a flower of splendid shape. A good border variety. Even more beautiful in color when forced. Height 26 in.....		1 20	9 00	88 00
Jubilee. Blue-purple, with a white base, marked blue; a flower of large size and heavy substance. Height 29 inches.....		2 00	15 00	
King Harold. Intense ruby-crimson, center rich black; very tall and of fine form; new and stately variety; very distinct. Height 24 inches.....		70	5 00	48 00
King George V. Glowing salmon-scarlet, shaded bright rose; inside brilliant orange-scarlet with blue base. A flower of intense color for outdoors. Height 25 inches.....		3 50	25 00	

La Fiancee. Deep rose, shading to old-rose and delicate pink at the edges, with blue base. A splendid variety of large size, and very effective when planted with mauve and dark lavender sorts. Height 30 inches.....	Doz.	100	1,000	
		\$3 50	\$25 00	
La Tristesse. Deep slaty blue, with white base, very distinct in color; medium-sized flower. Height 26 inches.....		70	5 00	\$48 00
La Tulipe Noire (The Black Tulip). The nearest in color to the so-called "Black Tulip." Deep maroon-black, which has a velvety sheen in the sunlight. Height 25 inches.....		1 00	7 00	68 00
Le Notre. Beautiful shade of bright pink, blue base starred white. Used for exhibition purposes on account of the very large size of the flower and its strong stem. Height 26 inches.....		85	6 00	58 00
Louise de la Valliere. Brilliant cherry-rose with pale blue base starred white. A very clear and beautiful color. Height 24 inches.		3 50	25 00	
Madame Krelage. Bright rosy lilac, with a pale silvery margin. A good forcing variety and excellent for the border as well. Height 28 in...		70	5 00	48 00



A Dutch Bulb Garden—Darwin Tulips, one variety to each of the various and pleasingly shaped beds

Giant Darwin Tulips (May-Flowering), continued



Darwin Tulip, Rev. Ewbank, planted along the shrubby border

Marconi. Deep purple when the flower first opens, gradually changing to ashy purple as the flower ages; pure white base. Height 27 inches	Doz.	100	1,000			
	\$	85	\$6 00	\$58 00		
Margaret. Pale rose ground, faintly flushed white, center white, marked blue—a very delicate color; flower globular in shape, borne on a strong stem. Splendid for forcing. Height 22 inches.		50	3 50	32 00		
Massachusetts. A long and beautiful flower; clear carmine-rose at the midrib, toning off to soft pink at the edges, the inside of the white base delicately tinged blue. Height 26 inches.		70	5 00	48 00		
Massenet. An exquisite shade of pale rose, with a broad white margin of creamy white; base bright blue. A grand acquisition to any collection however rare. Height 30 inches.	I	20	9 00	88 00		
Matchless (Roi d'Islande). Soft old-rose, with a narrow white border; inside soft violet-rose with a blue base. A very beautiful soft color and one that forces splendidly. Height 26 inches	I	20	9 00	88 00		
Mauve Clair. Soft lilac-mauve, slightly paler at the edges of petals; inside lilac-mauve, with white base. Height 26 inches.		85	6 00	58 00		
Melicette. A beautiful pure lavender, shading to paler lavender at the edges, with a beautiful blue base; quite the purest lavender Darwin. A flower of large size. Height 26 inches		85	6 00	58 00		

Mrs. Potter Palmer. Bright purplish violet, base white; a large flower. Very attractive for border planting. Height 28 inches.	Doz.	100	1,000			
	\$	60	\$4 00	\$38 00		
Mystery. An unusual flower of a deep shiny black color, base blue. A variety used for exhibition purposes on account of its size. Height 30 inches.		3 50	25 00			
Nauticas. Dark rose, center clear violet, shaded bronze; large flower. Excellent for outdoors and good for early or late forcing. Height 30 inches.		70	5 00	48 00		
Painted Lady. A pale creamy white, with a faint tinge of heliotrope, gradually becoming almost pure white as the flower ages. Height 27 inches.		70	5 00	48 00		
Pensee Amere. Slaty violet, with a broad flush at outer petals of rosy lilac, white base. Not a large flower but of exquisite shape. Height 26 in.		80	5 50	52 00		
Petrus Hondius. Bright carmine-rose, with a dull blue base starred white. An unusually brilliant variety. Height 28 inches.	I	20	9 00	88 00		
Philippe de Commines. A grand dark, polished mahogany color, with a purple base. One of the best of the less expensive sorts in this color. Height 24 inches.		60	4 00	38 00		
President Harding. A new variety which has proved very fine for exhibition work. The large, deep purple flower shaded violet, is borne on tall, strong stems, and is of unusual substance. A rare gem for the exhibition collection. Height 32 inches.		3 50	25 00			
Pride of Haarlem. Magnificently formed flower of immense size, brilliant, deep rose, shaded scarlet, with light blue base. This variety, perhaps the most widely known for its stately habit and glorious color, is unsurpassed for border planting. Height 36 inches.		60	4 00	38 00		
Prince of the Netherlands. Lively shade of cerise-scarlet, edged rose, with a blue base. Height 31 inches	I	00	7 00	68 00		
Princess Elizabeth (Julie Vinot). Beautiful clear deep pink, changing with age to rose-pink; white base. Large flower, quite like a rose when first open. Height 26 inches.		85	6 00	58 00		
Princess Mary. Bright carmine-rose with margin of rose-pink; inside clear carmine-rose with blue base and white halo; huge flower on a splendid stem. One of the finest of the new Darwins. Height 28 inches	\$2 each.	18 00	140 00			
Professor Rauwenhoff. Bright cherry-red, beautiful blue base; very large flower of wonderful substance. Height 24 inches		85	6 00	58 00		
Psyche. Old-rose, edged white, inside lighter rose, base blue. A very lovely variety for pots. Height 26 inches		60	4 00	38 00		
Pulcinella. A new tone of dark salmon-orange in the Darwin Tulips. A very attractive variety when grown in pots for exhibition on account of its fine strong stem and large flower of an attractive color. Height 32 inches.		2 50	20 00			
Purple Perfection. The color of the flower is a bright, glossy purple, large in size, and of wonderful substance. A splendid variety in the border, grows to the height of 26 inches.		70	5 00	48 00		
Queen Mary. Lovely shade of cerise-scarlet, edged deep pink, with bright blue base. A large flower of a very clear color. Height 28 inches.	I	20	9 00	88 00		
Raphael. Deep maroon-purple of rich tone, with blue base starred white. Very tall, large flower of sturdy character. The best reddish purple. Height 30 inches	I	10	8 00	78 00		

Giant Darwin Tulips (May-Flowering), continued

Remembrance. Pale lilac, general tone of the flower silvery. Quite distinct; large flower. Height 25 in.	Doz.	100	1,000	Venus. A splendid exhibition variety—the finest of its color. Pure, even tone of silvery rose, white base, marked with a pale blue ring. Height 28 in. \$1 each.	Doz.	100	1,000
	\$1 00	\$7 00	\$68 00		\$10 00	\$80 00	
Reverend Ewbank. An exquisite shade of soft lavender-violet, slightly shaded silver-gray. A variety of great merit on account of its lovely color, borne on stems 23 inches long	60	4 00	38 00	Village Maid. Soft rose with whitish base. This variety has a very large flower on a tall stem. Height 30 inches.	2 00	15 00	
Ronald Gunn. Bright shade of violet, edged pale lavender, with a conspicuous white base. A flower of splendid shape and, like most varieties near this shade, even more exquisite when grown in pots. Height 26 inches	85	6 00	58 00	Whistler. A variety much admired on account of its bright, transparent color—a bright shade of ruby-scarlet. Height 26 inches.	85	6 00	\$58 00
Sir Trevor Lawrence. Violet-maroon, with flush of ashy purple; inside violet-maroon with white base; very large, cup-shaped flower, on tall stem. Height 33 inches.	1 00	7 00	68 00	White Queen. A splendid white variety; when first opening is pale rose but quickly turns white—a truly exquisite color. Height 24 inches	70	5 00	48 00
Sophrosyne. Soft rosy lilac, edged silvery white; inside deep rose, with striking dull blue base. A large flower of very delicate beauty. Height 29 inches.	70	5 00	48 00	William Copeland. Uniform lilac-rose. A variety that was greatly admired in our exhibit of bulbs grown in pots at the New York Flower Show this year. May be forced as early and as easily as the early Tulips. The color, when grown indoors, becomes a most beautiful lavender. Height 24 inches	85	6 00	58 00
Suzon. Center of petals buff-rose, shading to bluish at the margin, with white base, delicately marked blue. A strong grower of fine stately habit. Height 25 in.	70	5 00	48 00	William Pitt. Very dark crimson, with purplish bloom on the outer petals. Of great size and beauty. Height 24 inches	70	5 00	48 00
Spring Beauty. Clear scarlet, with blue-black base and white star; large flower of most refined form, and the handsomest of all scarlet-red Tulips. Height 23 inches	1 00	7 00	68 00	Zulu. Deep, velvety purple-black; large, egg-shaped flower of very distinct form. Fine for border or forcing. Height 27 inches	85	6 00	58 00
The Bishop. Soft bluish violet, with ashy bloom; inside paler, with white base; a long flower of very artistic color. Height 28 inches	3 50	25 00		Zwanenburg. This variety, which first appeared in a specialist culture, was noted by us in 1913 when there existed six bulbs. It is the first example of a pure white Darwin. Still high in price on account of its scarcity. Height 28 inches.	10 00	80 00	
Valentin. A magnificent large, shapely Darwin Tulip. A light violet with a blue base. Height 22 inches.	1 00	7 00	68 00				

Superb Prize Mixture. The wonderful interest in these splendid Tulips has brought out a great many varieties too numerous for listing, except those considered the best. In addition to some of the varieties listed above, our mixture contains an equal proportion of many others. Brilliant effects may be obtained by the planting of this mixture of choice named sorts. 60 cts. per doz., \$4 per 100, \$35 per 1,000.



A well-designed and pleasing display of Darwin Tulips

DUTCH BREEDER TULIPS, May-Flowering

Breeder Tulips are very similar in habit to the Darwins, and flower at the same time. Their chief characteristic is their immense blooms, borne on strong, stiff stems, many of them longer than the most gigantic Darwins. The revival of the taste for art colors has made these Tulips, at one time very popular in England, strong favorites with American enthusiasts, who find in their bronze, buff, and brown shades excellent material for contrasting with the light and bright colors of the Darwins. They require the same cultural treatment as the Darwins.



The artistic colors of the Dutch Breeder Tulips lend a distinctive and refined atmosphere to the flower border

- Abd-el-Kader.** Dull bronze-yellow, shading to light bronze at edge of petals; inside bronze-brown, with olive-green base; good-sized flower. Height 26 inches. Doz. 100 1,000 \$1 50 \$12 00
- Apricot.** Dull, bronzy buff, shaded deep apricot, base olive-green. A splendid border variety, frequently having an extra number of petals. Height 25 inches. 1 00 7 00 \$68 00
- Bacchus.** Dark violet-blue, the outside of the petals having a darker bloom, base starred white. Quite the nearest approach to dark blue in late Tulips. Still high in price on account of scarcity. Height 28 inches. 2 00 12 00
- Bronze Queen.** Soft golden bronze; large flower of sturdy habit. A very exquisite color when forced and splendid for the border. Height 28 in. 70 5 00 48 00
- Cardinal Manning.** A splendid shade of rosy violet, with a slight edge of bronze. Large-sized flower of fine form. Height 28 inches. 70 5 00 48 00
- Cherbourg.** This is, undoubtedly, one of the finest Breeder Tulips ever introduced. We are able to offer only a limited quantity of it. Its color is best described as a deep tone of golden yellow, with a suffusion of terra-cotta, the deeper tone of yellow growing stronger toward the edges of the petals. The flower is much admired on account of its gigantic size and beautiful color. Height 32 inches. \$3 each. 35 00 275 00

- Coridion.** Clear yellow, with a faint suffusion of lilac; a flower of very dainty color. Fine for shrubby borders. Height 24 inches. \$2 00 \$15 00
- Dom Pedro.** Coffee-brown, shaded maroon, inside rich mahogany; large flower; very fragrant. Height 21 in. 1 30 10 00 \$98 00
- Dryad.** Lilac-old-rose, margined bronzy yellow, shading to buff with age; broader margin inside with bright apple-green base. A very beautiful Breeder of which we have only a few bulbs to offer. Height 22 inches. 2 00 15 00
- Fairy.** Reddish mahogany, with bronze shading; an extra-large flower of artistic character. Splendid in borders or for late forcing. Height 24 inches. 1 10 8 00 \$78 00
- Garibaldi.** One of the finest Breeders as yet introduced. Pale lilac-bronze, with a broad primrose-yellow margin. A long and graceful flower. Height 31 inches. 4 00 30 00
- Godet Parfait.** Dark blue-purple, with white base and blue halo; very large flower of striking color. One of the best Breeders for the border. Height 30 inches. 2 00 12 00
- Golden Bronze.** Light brownish yellow, with flush of heliotrope; inside rich mahogany-brown, rich yellow base. A large, well-formed flower of attractive appearance. Height 26 in. 1 00 7 00 68 00
- Goldfinch.** Elegantly formed, large, pointed flower. Rich golden chestnut, inside deep mahogany-brown, yellow base, marked olive. Height 30 inches. 3 50 25 00
- Heloise.** A beautiful shade of dark brown, shaded old-rose; yellow base, marked olive-green. Large-sized flower of wonderful color and very prettily reflexed petals. Height 28 inches. 2 50 20 00
- Indian Chief.** Reddish mahogany flushed purple, edged warm brown with age; yellow base. A huge flower of wonderful substance and most artistic shape, carried on a very tall stem. Height 33 inches. \$1.25 each. 13 00 100 00
- Jaune d'Oeuf.** Ruddy apricot, inside soft yellow, with black base and anthers; very striking variety. Height 21 inches. 1 20 9 00 88 00
- James Watt.** A new Breeder of exquisite form and coloring. Deep slaty violet, flushed bronze; inside dark mahogany, shaded brown, fine green base starred white. Height 26 inches. 2 50 20 00
- La Turquoise.** An excellent Breeder when grown indoors. Bright brick-red, with broad edge of deep yellow. Large flowers, strong stem and of great substance. Height 28 inches. 2 00 15 00
- Le Mogol.** Pale lavender-mauve, flushed white; inside deep mauve-lilac, with beautiful white base and blue halo. A flower of medium size but of exquisite color. Height 26 inches. 1 20 9 00 88 00
- Lord Cochrane.** Dark brown, with narrow margin of bright bronze-yellow; inside warm brown with yellow base. A striking Breeder because of the clear shade of yellow on the margin. Height 28 inches. 1 50 12 00
- Louis XIV.** An even tone of dark purple, with a broad margin of golden bronze; a very large flower of wonderful substance; green-black base starred yellow. A very scarce variety and one that instantly meets with favor when grown. Height 30 inches. 1 50 12 00

Dutch Breeder Tulips (May-Flowering), continued

Lucifer. Clear orange, with a rosy flush and olive base, with yellow star; very large flower on a tall stem. A gorgeous color which glows like a fire. Height 24 inches. . . . \$2 50 \$20 00

Madame Lethierry. Dark crushed strawberry edged and flushed salmon—a unique color; medium size, a very distinct form, and a variety of great beauty when grown in partial shade. Height 26 inches. I 30 10 00 \$98 00

Madras. Golden bronze, with dull heliotrope stripe on the outer petals, yellow base starred green. A long, good-sized flower. Rather tall, stately habit. Height 26 inches. I 00 7 00 68 00

Marechal Victor. Pale lavender-violet, with broad edge of buff shaded bronze; inside violet, faintly flushed mahogany with beautiful green base—a wonderful color combination which we have seen in no other Tulip. A large flower of open graceful form. Tall and holds the bloom well poised. Height 28 in. 4 50 35 00

Marie Louise. Old-rose, flushed orange-salmon, with purplish bloom and olive base. A very beautiful Tulip for border planting and one of the most richly colored. Height 23 inches. I 20 9 00 88 00

Newton. Dark purple, with plum bloom on outer petals. A flower of the same tone as Darwin Jubilee, but not so large. One of the tallest Tulips. Height 35 inches. 9 00 70 00

Old Times. Dull garnet, edged primrose-yellow, with greenish base; rather long flower of somewhat pointed form. A showy Breeder of English origin. Height 24 inches. I 20 9 00 88 00

Pink Pearl. A new Breeder and quite the finest of its color. The outside of the flower is a lilac-pink, inside rose, beautiful white base. A magnificent, large, egg-shaped flower. Height 26 inches. 4 50 35 00

Plutarchus. Bronzy yellow, with a flush of heliotrope in the center of the petals; a flower of wonderful substance and splendid form. Height 26 inches. I 10 8 00 78 00

Prince of Orange. Dark terra-cotta-brown, shaded yellow, with a yellow base starred black. Splendid for the border and good for forcing. Height 24 inches. \$1 50 \$12 00

Prince Albert. Golden brown, with purple flush through center of petals, which disappears as the flower ages. Height 32 inches. I 30 10 00 \$98 00

Prince of Wales. Warm maroon-brown; inside coppery brown, with black base, starred yellow. Long flower of flat, open form, fine for planting with paler bronze Breeders. Height 28 inches. 2 00 15 00

Roi Soleil. This new Breeder Tulip is a combination of shades—rich dark violet, flamed with bronze. A magnificent, large flower borne on strong stems. Height 28 inches. 4 00 30 00

Queen Alexandra. Canary-yellow, broadly flushed lilac-brown at the edges of the petals. A distinct variety for outdoors or forcing. Height 23 inches. 85 6 00 58 00

Salomon. Silvery lilac, flushed buff when opening, inside slightly deeper tone, with large, white base; very long, loosely formed flower, carried on a graceful stem. Height 30 inches. I 30 10 00 98 00

Socrates. Deep rosy violet, with dull blue base; large flower of stately habit, often having an extra number of petals. Height 28 inches. I 00 7 00 68 00

St. James. Dark rosy lilac, edged bronzy tan, with coppery rose flush at tips of petals; inside ruddy mahogany, edged golden brown with yellow and green base. A large flower on tall stem. Height 28 inches. 2 00 15 00

Turenne. Purplish brown, with a broad margin of soft yellow, very large flower and on account of its unique coloring very attractive for group planting. Height 28 inches. I 50 12 00

Velvet King. Deep, glossy purple-maroon, with a white base; a flower of gigantic size, lasting a long time in bloom. A magnificent Tulip for the border or shrubbery and forms an effective contrast when planted with the light-colored Tulips. Height 28 inches. I 50 12 00

Vulcain. Reddish apricot, with a broad margin of bright buff-yellow, inside dark apricot, edged yellow, with dark green base starred yellow. A beautifully shaped flower and in color unlike any other Tulip. Height 25 inches. 2 00 15 00

Dutch Breeder Mixture.
A choice mixture of many varieties of this type of Tulip. Magnificent combinations of colors and shades from beautifully flushed white to deep wine-red, art bronze and darkest maroon. 75c. per doz., \$5 per 100, \$45 per 1,000.

Plant a Few Dutch Breeder Tulips This Year



COTTAGE AND HYBRID TULIPS

MAY-FLOWERING

The Cottage Tulips, like the Darwins, flower late. Many of the varieties are used extensively for late bedding and are magnificent for this purpose. The pale primrose, deep yellow, and splendid white varieties are often planted with the Darwins for effects of contrast. The following list we feel sure contains most of the best varieties. Certain varieties, like some of the Darwins, will flower a few days earlier than others, but on the whole the earliest is just at its best when the latest-flowering variety is just beginning to show bloom. We have included many of the finest of the new late-flowering Hybrid Tulips. They are the results of crossing the Darwin with Cottage Tulips, and bloom at the same time as the other May-flowering varieties.

Alaska. One of the finest of the new Hybrid Tulips. The flowers are long, the outer petals slightly reflexed and of an even tone of pure yellow. Height 28 inches. **\$4.50 per doz., \$35 per 100.**

Alcmene. A hybrid Tulip with Darwin-shaped petals. This new variety is of great beauty, best described as a rich, glowing rose, with creamy white base, having a pale blue border. Height 25 inches. **\$4 per doz., \$30 per 100.**

Ambrosia. This beautiful new variety of Hybrid Tulip contains a combination of shades—bronze with rosy lilac glow; inside of the large, well-shaped flower is a salmon-orange tone. Height 22 inches. **\$3.50 per doz., \$25 per 100.**

Argo. Another beautiful new hybrid variety on account of its distinct and lovely color. The flowers are round, borne on strong stems, golden yellow, mottled red and passing off to a reddish brown. A delicate bronze-salmon when grown indoors. Height 22 inches. **\$2 per doz., \$12 per 100.**

Arethusa. The large, urn-shaped flower is of true Cottage form, of a light shade of chrome-yellow. A new variety greatly admired on account of its size, lovely form, and fine, erect stem. Height 25 inches. **\$6 per doz., \$40 per 100.**

Avis Kennicott. A rich, deep shade of yellow, with a striking black base and anthers. One of the best of the newer varieties. Height 25 inches. **\$1.30 per doz., \$10 per 100, \$98 per 1,000.**

Carrara. This Tulip, when first exhibited, in 1921, was considered the finest new white variety. Blooms broadly cup-shaped with rounded petals that all come to the same level when the flower is half open. Height 26 inches. **\$1 ea., \$10 per doz., \$75 per 100.**

Dido. A large, well-formed flower of rich orange-rose tone, with margin of bright orange-yellow, inside bright orange with yellow base. Height 24 inches. **\$1 each, \$10 per doz., \$75 per 100.**

Fairy Queen. Beautiful soft rosy lilac, outer petals broadly margined amber-yellow. A variety that should be included in every collection on account of its unique color. Height 20 inches. **70 cts. per doz., \$5 per 100, \$48 per 1,000.**

Flava. Canary-yellow, large, exquisitely formed flower with magnificent lasting qualities. Height 25 inches. **\$3 per doz., \$20 per 100.**

Gesneriana ixioides. Soft primrose-yellow, with black base; egg-shaped flower of medium size, attractive for the contrast between the base and the rest of the flower. Height 22 in. **85 cts. per doz., \$6 per 100, \$58 per 1,000.**

Gesneriana lutea. One of the best of the well-known Gesneriana family. A bedder of unsurpassed qualities, with perfect-shaped flowers of purest golden yellow, on strong stems holding the flowers perfectly erect. Height 24 inches. **75 cts. per doz., \$5 per 100, \$48 per 1,000.**

Gesneriana spatulata, or major. The beautiful curved flowers are brilliant scarlet, with a bluish black center, on tall stems. Height 18 inches. **75 cts. per doz., \$5 per 100, \$48 per 1,000.**

Grenadier. Brilliant orange-red. A new Tulip of great beauty. Flowers long, borne on very graceful stems. Height, 24 inches. **85 cts. per doz., \$6 per 100, \$58 per 1,000.**

Hammer Hales. Golden brown, flushed old-rose; inside bright apricot, edged bronze-yellow, with a yellow base. Height 24 inches. **\$1.20 per doz., \$9 per 100, \$88 per 1,000.**

Inglescombe Pink (Salmon Queen). Beautiful soft rosy pink, slightly flushed salmon; large, globular flower of excellent form. Adapted for borders or late forcing. Height 22 inches. **70 cts. per doz., \$5 per 100, \$48 per 1,000.**

Inglescombe Yellow. A beautiful variety. Size, form and height greatly resemble the Darwins, so much so that it is frequently called the "Yellow Darwin," a fitting title. Height 22 inches. **70 cts. per doz., \$5 per 100, \$48 per 1,000.**

Innocence. Pure white, with yellow base; a flower of fine form on a stiff stem. Excellent for border and a good variety for pots if forced gently. Height 20 inches. **\$2.50 per doz., \$20 per 100.**

John Ruskin. Salmon-rose, edged soft lemon-yellow, inside deep rosy lilac—a beautiful combination of colors; large flower of fine shape on a graceful stem. Height 16 inches. **\$1 per doz., \$7 per 100, \$68 per 1,000.**

Kingfisher. Creamy yellow ground, with age turning whiter, irregularly striped and feathered maroon and violet; blue-green base; large flower on sturdy stem. A most interesting variety, well named because of the combination of unusual colors. Height 18 inches. **\$3.50 per doz., \$25 per 100.**

La Merveille. Very large, sweet-scented flowers. Salmon-rose, overlaid with orange-red. A grand border variety. Height 20 inches. **70 cts. per doz., \$5 per 100, \$48 per 1,000.**



COTTAGE TULIPS—(1) Inglescombe Pink, (2) Inglescombe Yellow, (3) Gesneriana spatulata or major, (4) Picotee

Cottage and Hybrid Tulips (May-Flowering), continued

Miss Willmott. A pale primrose-yellow of true Cottage form. In good demand on account of its delicate color. Height 18 inches. **85 cts. per doz., \$6 per 100, \$58 per 1,000.**

Moonlight. Bright canary-yellow; splendid, large flower, oval in shape, outer petals slightly reflexed at the tips. An excellent yellow for combination with the Darwin varieties. Height 22 inches. **70 cts. per doz., \$5 per 100, \$48 per 1,000.**

Mrs. Kerrell. Beautiful light rose with a delicate amber tinge, center white, bordered electric blue. A new variety of very refined coloring and shape and destined to win a place for itself among discriminating flower-lovers. Height 18 inches. **\$1.30 per doz., \$10 per 100.**

Mrs. Moon (Fulgens lutea maxima). Deep golden yellow, large flowers of good substance, slightly reflexing. Height 24 inches. **\$1 per doz., \$8 per 100, \$78 per 1,000.**

Orange King. Beautiful deep orange, shaded rose, inside deep orange-scarlet with a yellow center. Height 23 inches. **70 cts. per doz., \$5 per 100, \$48 per 1,000.**

Picotee (Maiden's Blush). White, margined deep rose, the color suffusing the whole flower as it ages; medium-sized flower, reflexing. A grand Tulip for the border. The sight of a large bed planted wholly to this variety is one that will not easily be forgotten. Height 20 inches. **60 cts. per doz., \$4 per 100, \$38 per 1,000.**

Quaintness. Old-gold, flushed deep rose; inside old-gold, shaded mahogany. Immense flower with very long petals. Height 24 inches. **\$3.50 per doz., \$25 per 100.**

Rosabella. This beautiful novelty—the finest introduction in Cottage Tulips of recent years—is, perhaps, best described as a beautiful shade of salmon-rose. Height 21 inches. **\$1.50 each, \$15 per doz., \$100 per 100.**

Scarlet Emperor. Where a glowing shade of scarlet is desired, this is one of the finest of its color in Cottage Tulips. Height 22 inches. **\$1.20 per doz., \$9 per 100, \$88 per 1,000.**

Sirene. This beautiful lily-flowering Tulip is not only a lovely variety on account of its color, but because of the exquisite urn-like shape of the flower. A rich cerise-pink, white base. Splendid for exhibition. Height 26 inches. **\$1.30 per doz., \$10 per 100.**

Themis. A lovely hybrid Tulip, the result of crossing a Darwin and Cottage Tulip. It is of characteristic Darwin shape, with somewhat reflexing petals, and a beautiful pure white throughout, with fine strong stem. This and Carrara are two of the finest white hybrid Tulips. Height 28 inches. **\$5 per doz., \$40 per 100.**

The Fawn. The coloring is a unique shade of pale rosy fawn, changing to blush-rose. Height 20 inches. **70 cts. per doz., \$5 per 100, \$48 per 1,000.**

The Lizard. Deep blood-red, with purple bloom, striped and feathered yellow and white. A Tulip of most unusual markings. Height 24 inches. **\$1 per doz., \$7 per 100, \$68 per 1,000.**

Twilight. Dull violet-mauve, edged warm brown, irregularly striped and flamed dark violet; white base with blue halo, and striking white midrib; long, good-sized flower. Height 23 inches. **\$2 per doz., \$15 per 100.**

Vitellina. Pale yellow, becoming creamy white as the flower ages; large flower of great substance and beauty; sweet-scented. Excellent forcer. Height 20 inches. **70 cts. per doz., \$5 per 100, \$48 per 1,000.**

Walter T. Ware. Deep golden yellow, the deepest and richest color among Late Tulips; broad, globular flowers reflexing at the top. Height 18 inches. **\$4 per doz., \$30 per 100.**

Yellow Picotee. Beautiful canary-yellow, margined deep rose. A yellow counterpart to the well-known variety Picotee. A showy bedder. Height 20 inches. **85 cts. per doz., \$6 per 100, \$58 per 1,000.**

Zommerschoon. One of the oldest of Cottage Tulips—a combination of ivory and carmine. Height 20 inches. **\$4.50 per doz., \$35 per 100.**

Superb Mixture. A select assortment, covering almost every conceivable color and shade. Those who have not grown these Tulips, and desire a mixture for trial purposes, can depend on getting every color that obtains in this beautiful class of Tulips. **50 cts. per doz., \$4 per 100, \$35 per 1,000.**



A well-thought-out arrangement of Darwin and Breeder Tulips, with the Cottage Tulip Picotee in the foreground

BOTANICAL TULIPS AND SPECIES

We offer below a list of the Botanical Tulips as well as species varieties of Tulips which are natives of Asia Minor and Central Asia. The varieties offered, with the exception of Clusiana, are grown in Holland from collected stocks. We advise our patrons to make a trial of some of these Tulips.

CLUSIANA. The "Little Lady" Tulip. A lovely little variety which originated in Asia Minor. Grows about 8 inches high, flowers as large as a crocus. Outer petals cherry-red, inner petals white with violet base. Should be planted 8 to 9 inches deep in light soils in a sheltered place. Excellent bulb for the rock-garden. We have exhibited pots of this lovely Tulip at the New York Spring Flower Show every year for the past ten years and it is always greatly admired. Bulbs are grown for us by a specialist in the south of France and are excellent for pot-culture as well as for the rock-garden. For indoors plant same as recommended for other Tulips. **\$1 per doz., \$8 per 100, \$78 per 1,000.**

EICHLERI. This splendid Tulip from Turkestan produces large crimson-scarlet flowers with a glistening black center marked with gold. Height 12 inches. **\$2.50 per doz., \$20 per 100.**

FLORENTINA ODORATA. Fragrant, rich yellow flowers, frequently two to a stem, with bronze interior, carried on slender stems. An interesting species. Height 18 inches. **\$1 per doz., \$7 per 100, \$68 per 1,000.**

KAUFMANNIANA. One of the earliest of all the Tulips to come in flower. Creamy white, tinged rosy red, the markings varying. The flowers are very attractive, large in size, with petals reflexing. Blooms early in April. **\$3.50 per doz., \$25 per 100.**

MARJOLETTI. Pale yellow, mottled toward the outer petals with scarlet. A lovely species, which blooms outdoors during late April. Height 14 inches. **\$1 per doz., \$8 per 100, \$78 per 1,000.**

PERSICA. A splendid variety for the rock-garden on account of its dwarf habit. The fragrant yellow flowers, bronze on the exterior, are borne in twos and threes on slender curving stems. Height 3 inches. **\$1 per doz., \$7 per 100, \$68 per 1,000.**

SPRENGERI. Bright orange-scarlet flowers, very striking and does not bloom until late in May. Grows 8 to 10 inches tall. Splendid for the rock-garden. **\$3.50 per doz., \$25 per 100.**

Striped and Feathered May-Flowering Tulips

BYBLOEM AND BIZARRE TULIPS



Rose Bybloem Tulip, Athalia

Bybloem and Bizarre Tulips are "rectified" Breeder types. The Tulips are of an old race which has been grown in Holland and in France since the beginning of the seventeenth century, and which caused the famous Tulip craze in 1635. The Bybloems are queerly striped and feathered rose or violet on a white ground. The Bizarres have dark brown stripes and feathering on a yellow ground. The varieties offered are the newer sorts, and the flowers are larger than the older and smaller-flowering sorts. They flower about the same time as the Breeder and Darwin Tulips but do not grow quite so tall, and are seen at best advantage when planted in clumps in the herbaceous border or among evergreens and shrubs. The stems average from 18 to 23 inches in height.

ADMIRAL KINGSBERGEN. (Rose Bybloem.) Bright crimson, feathered and flamed with white; large flower, borne on a stiff stem. **\$2 per doz., \$15 per 100.**

ATHALIA. (Rose Bybloem.) White, bordered and feathered bright rose. **\$1.30 per doz., \$10 per 100.**

BLACK BOY. (Bizarre.) Yellow ground, feathered and flamed dark brown. **\$1 per doz., \$7 per 100.**

EMPEROR DU MAROC. (Bizarre.) Bright yellow ground, feathered and flamed dark red. **\$1.10 per doz., \$8 per 100.**

GLORY OF HOLLAND. (Violet Bybloem.) Pure white, feathered and flamed violet-purple. **\$1.50 per doz., \$12 per 100.**

LADY STANLEY. (Violet Bybloem.) White, feathered and striped dark violet. **\$1.10 per doz., \$8 per 100.**

OVIDIUS. (Bizarre.) Reddish brown ground, feathered yellow; very attractive variety. **\$1.10 per doz., \$8 per 100.**

PRINS MAURITZ. Yellow ground, variegated dark brown. **\$1.10 per doz., \$8 per 100.**

REINE DE HOLLANDE. (Rose Bybloem.) White, feathered and flamed red; a very attractive and distinctly variegated Tulip. **\$1.10 per doz., \$8 per 100.**

ROMEA. (Bizarre.) Bright yellow, feathered and bordered with orange-red; a very striking variety of large size. **\$1.10 per doz., \$8 per 100.**

VONDEL. (Violet Bybloem.) White ground, striped dark violet and feathered light violet. **\$2 per doz., \$15 per 100.**

ROSE BYBLOEM TULIPS, MIXED. **\$1 per doz., \$7 per 100.**

VIOLET BYBLOEM TULIPS, MIXED. **\$1 per doz., \$7 per 100.**

BIZARRE TULIPS, MIXED. An excellent mixture of choice named sorts. **\$1 per doz., \$7 per 100.**

REMBRANDT TULIPS

Rembrandt Tulips are in reality "broken" forms of Darwin Tulips. Each year many of our best varieties of Darwin Tulips show a tendency to break, or become variegated. These Tulips, on account of their odd colorings and variegations, were very popular at one time, and while the modern tendency to favor self-colors is recognized generally throughout all countries, these broken forms are sometimes preferred and possess splendid decorative value. The stems average from 18 to 22 in. in height.

APOLLO. Lilac-rose and white, striped dark carmine. **\$1.10 per doz., \$8 per 100.**

CARACALLA. White, striped and feathered carmine-red; a very attractive variety. **\$1.10 per doz., \$8 per 100.**

EROS. Soft lilac, feathered dark violet; not a large but exquisite flower. **\$1.10 per doz., \$8 per 100.**

JULIENNE. Rose, striped and feathered carmine-purple and white. Edges of petals broadly blotched white makes splendid contrast with the rich color of the flower. **\$1.20 per doz., \$9 per 100.**

LA COQUETTE. Violet, flamed purple and white; not a large but an exquisite flower. **\$1.10 per doz., \$8 per 100.**

MARCO SPADO. White, flamed bright carmine-red; large flower. **\$1.30 per doz., \$10 per 100.**

SEMELE. White, heavily striped and feathered vivid rosy pink. A Tulip of exquisite coloring; large flower. **\$1.10 per doz., \$8 per 100.**

VICTOR HUGO. Brilliant carmine, feathered white. **\$1.10 per doz., \$8 per 100.**

REMBRANDT TULIPS, CHOICE MIXED VARIETIES. **\$1 per doz., \$7 per 100.**

PARROT TULIPS

Three-Year-Old Flowering Bulbs

Fantasy. A glorious Parrot Tulip with a straight, strong stem. It is a sport from the Darwin Tulip, Clara Butt, with exactly the same beautiful true pink color but the quaint artistic shape of a Parrot Tulip. Several pans of this exhibited in our display at the New York Flower Show this spring created a sensation. **\$1 each, \$10 per doz., \$75 per 100.**

Amiral de Constantinople. Large, red flowers, tipped with orange.

Cramoisi Brilliant. Deep carmine; very handsome.

Lutea major. Large; bright yellow, with crimson and green stripes.

Perfecta. Yellow and red, striped. **Mixed Parrot Tulips.**

Price, any of the above (except Fantasy), 85 cts. per doz., \$6 per 100



Parrot Tulips



Double Tulips, Couronne d'Or

DOUBLE EARLY TULIPS

FLOWERS JUST AFTER EARLY TULIPS, IN LATE APRIL

Double Tulips are chiefly grown for their showy effects in masses, and are very lasting. Where a display of color is desired they are very satisfactory. Excellent for growing in pots or pans, but should not be forced into bloom very early.

The following list contains many of the best tested novelties, as well as all worth-while standard sorts.

Azalea. B 12. Beautiful deep rose, flushed salmon. A splendid variety for forcing on account of its lovely color.	Doz.	100	1,000	
	\$1 20	\$9 00	\$88 00	
Bleu Celeste. C 14. Soft violet-purple; large flowers of very pleasing color. A beautiful Tulip for cutting or late forcing. A variety much later than other Double Tulips.		85	6 00	58 00
Boule de Neige. B 10. Beautiful, large, full flower of glistening white; greatly resembling a peony in form. Excellent for bedding or forcing.		85	6 00	58 00
Couronne d'Or (Crown of Gold). B 10. Large, bold flower of rich golden yellow, shaded copper. Excellent for bedding and winter forcing.		85	6 00	58 00
El Toreador. B 12. Bright orange-scarlet, with a broad margin of buff-yellow. Excellent for pots or bedding.	I 20	9 00	88 00	
Golden King. A 12. Soft canary-yellow shaded deeper yellow. Very fine for forcing or bedding.	I 00	7 00	68 00	
Imperator Rubrorum. B 10. Excellent scarlet for bedding and forcing. Still remains among the best of the older varieties.	I 00	7 00	68 00	
Mystery of India. B 12. Beautiful terra-cotta and orange, slightly shaded old-rose; a large, well-formed flower on a strong stem.	I 30	10 00	98 00	
Murillo. C 12. Delicate rose-pink, flushed white. Fine for bedding, and excellent for forcing.	60	4 00	38 00	
Peach Blossom. C 12. Bright rose-pink, flushed white, deepening with age to carmine-rose; large. A sport of Murillo. Excellent for pots.	I 00	7 00	68 00	
Queen of the Pinks. B 14. Splendid new shade of rosy pink; fine large flower of a lovely even tone when forced.	I 00	7 00	68 00	
Rubra Maxima. B 10. Rich deep brilliant scarlet, this is considered one of the finest varieties of its color for bedding.	85	6 00	58 00	

Safrano (Brimstone; Tea Rose). B 12. Doz. 100 1,000 This variety is a sport of Murillo; flowers open pale yellow, flushed salmon, but develop a rosy apricot in a day or so. So	85	\$6 00	\$58 00
Salvator Rosa. B 12. Beautiful deep rose, slightly flushed white. Excellent for beds or forcing.	85	6 00	58 00
Schoonoord. B 12. A beautiful, pure white sport of Murillo, with the same excellent forcing qualities. One of the best, if not the best white double.	85	6 00	58 00
Van der Hoef. C 12. A beautiful pure yellow sport of the variety Murillo. Fine new variety for forcing.	I 20	9 00	88 00
Vuurbaak. B 12. Brilliant scarlet, when fully open the flower gets an orange hue. One of the best scarlets for bedding owing to its sturdy stem.	I 00	7 00	68 00



Double Tulip, Murillo

S. & W. Co.'s Special Mixture. A mixture consisting of 15 named varieties, blended so as to give an assortment of all possible colors and shades, all of vigorous habit and large size, uniform height and time of blooming. 70 cts. per doz., \$5 per 100, \$48 per 1,000.

SINGLE EARLY TULIPS

FOR APRIL-BLOOMING OUTDOORS, POTS AND FORCING

Few, if any, of the spring-blooming flowers rival the Tulip for brilliancy of bloom or ease of culture. For formal beds on the lawn or garden borders they are excellent subjects. They do not possess the same size of bloom and length of stem of the May-flowering Darwin, Breeder and Cottage varieties, but where early blooms are desired they are frequently used. Many of the varieties may be forced in bloom in January, while all the varieties may be easily had in flower in pots late in February or early March.

Culture.—For indoor blooming they require the same cultural treatment as Hyacinths.

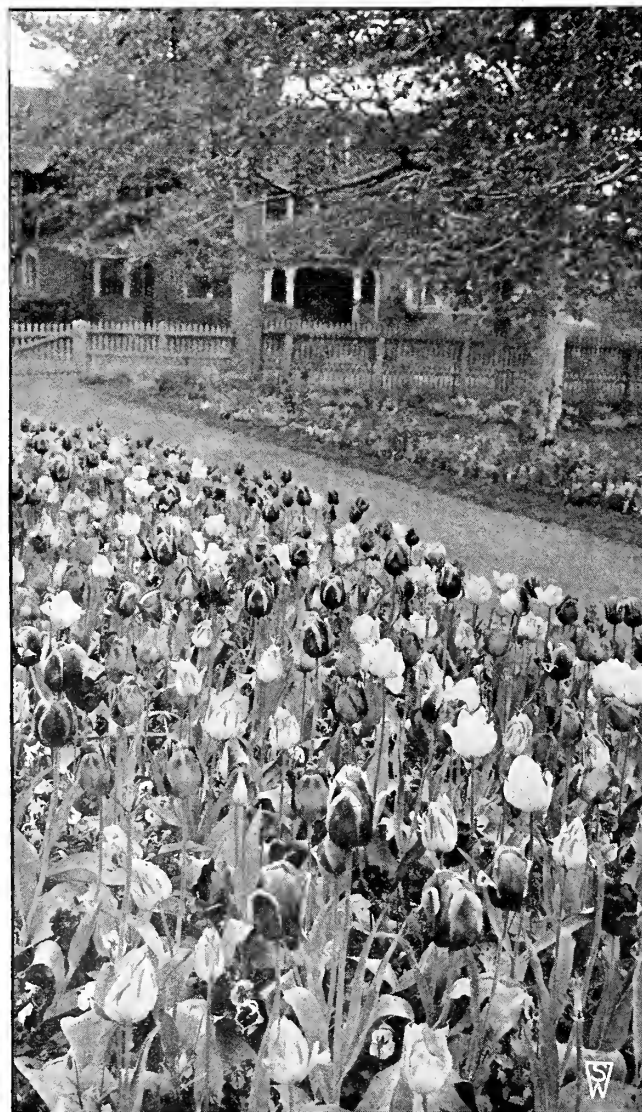
Outdoor Culture.—Bulbs may be planted with good assurance of success even in early December, if the ground is open. They should be planted not more than 5 inches apart, covering the bulbs about 4 inches over the top. After the first sharp frost which forms a light crust on the surface of the soil, old leaves or litter should be spread about 6 inches thick over beds or borders to prevent frost from going deeper. Do not cover bulbs, if planted early, until the first sharp frost, as field-mice frequently nest among leaves and destroy bulbs, which is impossible if the covering is placed after the first hard frost.

Note.—The letters A, B and C, following the varieties indicate their relative earliness of bloom; but, with few exceptions, most of the varieties, however, bloom outdoors about the same time when planted in masses. The figures indicate the height in inches.

The following list contains the best novelties extant, as well as a complete list of the best standard varieties. We have discarded quite a number of varieties which no longer grow well.

BEST STANDARD AND NEW AND RARE VARIETIES

Belle Alliance. B 11. Brilliant scarlet, Doz. 100 1,000
yellow base; large
flower. An excellent variety for early for-
cing and does very well for bedding also...\$0 85 \$6 00 \$58 00



A border of Single Early Tulips

Brilliant Star. A 12. Bright vermilion-Doz. 100 1,000
ion-scarlet, same color
as Vermilion Brilliant, but larger and of
great substance. Splendid early forer,
flowering easily for Christmas.....\$1 10 \$8 00 \$78 00

Cerise Gris-de-Lin. C 11. Dark car-
mine-violet, sha-
ded fawn and margined creamy white, with
yellow base; large flowers of globular form.
A novel bedding variety, but must be
planted alone; excellent for March forcing.. 85 6 00 58 00

Couleur Cardinal. C 12. A bright
crimson-scarlet,
with a deeper tone or bloom on the outer
petals. A bed planted wholly to this variety is
a grand sight. Grand for midseason forcing. 1 00 7 00 68 00

Cramoisi Brillant. C 13. Glowing
scarlet, with yellow
base; long, narrow flowers of perfect form. 70 5 00 48 00

Cramoisi Royal. B 14. A large flower of a
bright carmine-rose,
borne on strong stems. A lovely satiny rose
color when grown in pots..... 1 30 10 00 98 00

De Wet. B 16. Golden yellow, flushed
deep orange; large, sweet-
scented flower of erect habit. Quite different
in color from any other variety..... 2 00 12 00

Diana. B 14. Pure glistening white, with a yel-
low base; long flower of handsome
shape. A fine new Tulip which grows more
beautiful as it ages..... 70 5 00 48 00

Enchantress. C 10. A very novel and
attractive variety. Bright
cherry-red with a broad border of creamy
white; excellent for forcing or bedding.... 1 20 9 00 88 00

Flamingo. B 12. Carmine-rose, shaded
lighter. The petals are striped
white and very crinkled, giving the flower
a decidedly artistic appearance. A very
popular variety among florists for forcing
on account of its odd color and habit..... 85 6 00 58 00

Fred Moore. B 12. An improved form of
Thomas Moore. Deep,
ruddy apricot, shading at the edges of the
petals to dull orange-yellow, center marked
olive-green; medium-sized flower; sweet-
scented. A lovely color when forced..... 70 5 00 48 00

Golden Queen. B 13. Golden yellow;
large flower of extra-
fine form. Excels all existing yellows for
substance, and excellent for early forcing... 1 00 7 00 68 00

Ibis. B 14. Quite the finest novelty offered
by us this year. A brilliant dark pink
color when grown indoors. A grand exhibi-
tion variety..... 1 30 10 00 98 00

King of the Yellows. A 14. Deep
golden yel-
low; the flowers are egg-shaped, very sub-
stantial and carried on a tall stem, which
makes them excellent for cutting. One of
the earliest yellows which should be much
more used for early forcing..... 85 6 00 58 00

Single Early Tulips, continued

Keizerkroon. A 15. Bright crimson-Doz. 100 1,000
scarlet, edged clear, rich
yellow; excellent, large flower on long stem.
Fine bedder; splendid for forcing.....\$1 00 \$7 00 \$68 00

Lady Boreel (Joost Van Vondel White). B 13. Snowy
white; large, long flower of splendid shape.
The finest white for bedding, and superb for
pots or pans. Cannot be forced so early as
Pelican or White Hawk..... 85 6 00 58 00

La Reine Maximus. B 12. White,
flushed faintly
with pink. Used largely by florists for early
forcing and a very lovely variety..... 70 5 00 48 00

La Remarquable. C 13. Brilliant claret-
purple, edged and
tipped old-rose. A very large flower of elegant
reflexing shape and a rather odd color
among early Tulips. Good for bedding or
late forcing..... 85 6 00 58 00

Le Reve (Hobbema; Sarah Bernhardt).
C 14. This variety caused con-
siderable favorable comment in our exhibit
of bulbs at the New York Flower Show this
spring. The color is old-rose, flushed buff;
a very large, globular flower with rounded
petals and carried on a strong stem. Excel-
lent for late bedding, and retains color well
if not forced before March..... I 10 8 00 78 00

Max Havelaar. Very close in color to
watermelon-red; rather
large, well-formed flowers. A very striking
variety..... I 20 9 00 88 00

Mon Tresor. A 12. Golden yellow; the
flowers are large and of a
pure color. Mostly used for growing in pots
or pans, for which purpose it is best..... I 10 8 00 78 00

Moonbeam. B 14. Deep primrose-yel-
low, shading to soft canary
at the edges; very large flower of graceful
form. An improved form of Primrose
Queen..... I 30 10 00 98 00

Pelican. A 14. A splendid new, pure
white variety, and of wonder-
fully large size. Excellent for exhibition;
sport of the variety White Hawk..... 85 6 00 58 00

Pink Beauty. C 12. Bright cherry-rose,
center of petals striped
white. It has no equal as a bedder, for the
stem is strong and the white center of the big,
fleshy petals shows up very conspicuously
against the broad, vivid rose edges. Does
well in pans, but not before March..... I 30 10 00 98 00

President Lincoln. B 12. Large flower
of clear magenta-
violet, slightly paler in tone when grown
indoors. A variety that looks well when
bedded out with a pale yellow variety.... 85 6 00 58 00

Prince of Austria. B 14. Brilliant
orange-scarlet,
with a clear yellow base. The flower is
large and of a very attractive shade when
forced. A splendid bedding variety as well.. 85 6 00 58 00

Princess Wilhelmina. B 13. Deep
pink, with
striking white flush on outer petals; long
pointed flower. Fine for bedding..... 85 6 00 58 00

Proserpine. A 14. Rosy carmine, with a
white center marked slate-
blue; a very large globular flower. One of
the easiest and earliest forcing Tulips;
very sweetly scented. Good bedding vari-
ety also..... I 10 8 00 78 00



Beds of Single Tulips

Queen of the Netherlands. B 13. Doz. 100 1,000
Beau-
tiful pale rose flower of large size. One of
the finest pale pink Tulips for bedding.
Good for forcing, retaining its delicate color
well if not forced too hard.....\$0 70 \$5 00 \$48 00

Rising Sun. B 15. A new variety used
for exhibition on account of
its pure yellow color, and wonderful size
and substance. The finest golden yellow
early Tulip introduced to date..... I 20 9 00 88 00

Rose Luisante. C 10. Brilliant, deep
rose-pink; large flower.
Splendid for bedding, or pots..... 85 6 00 58 00

Van Der Neer. B 12. Deep dark pur-
ple; a flower of a most
brilliant tone and splendid shape. A won-
derful color out-of-doors..... I 10 8 00 78 00

Vermilion Brilliant. A 12. Bright,
glistening scar-
let, with a yellow base; very large flower of
perfect shape. Splendid for early forcing... I 00 7 00 68 00

White Hawk. B 12. Lovely pure white,
very large, globe-shaped,
of great substance. A very early forcer.... 85 6 00 58 00

Yellow Prince. B 12. Clear golden yel-
low. A large flower used
by florists for early forcing or bedding..... 85 6 00 58 00

S. & W. Co.'s Special Mixture. A mixture consisting of 25 named varieties, blended so as to give an assortment of all possible colors and shades, all of vigorous habit and large size, uniform height and time of blooming. 60 cts. per doz., \$4 per 100, \$38 per 1,000.

EXHIBITION HYACINTHS

Every year our growers prepare to select the finest grade of Hyacinths for us for exhibition. These bulbs are of maximum size, and fully aged for this purpose. The varieties listed below are grown especially for us, and intending exhibitors at the International Flower Show next spring will be interested in our selection of varieties which we believe, when grown for exhibition, should capture First Premiums. The Hyacinth enthusiast who is interested in novelty varieties will also find this list valuable.

We offer only the best sorts. There are several hundred varieties grown abroad, but we do not consider that there are over thirty of them worth growing. Bulbs such as we supply should be planted singly in a 5-inch pot, or four bulbs to an 8-inch bulb-pan. As there is a slight variation in the time of flowering between the different varieties, we have therefore indicated the relative time of blooming, 1 being early, 4 the latest.

ARENTINE ARENDSSEN. 1. Snowy white; open, wide-petaled bells, and narrow, well-filled spike. A splendid exhibition variety.

CITY OF HAARLEM. 3. Soft Naples yellow, shaded deeper; large, well-formed truss and good stem. One of the best new yellows.

DR. LIEBER. 2. Pale lavender-blue, with a faint tinge of dark violet; large spike, well filled out. A handsome variety for bedding and a very early forcer.

ELECTRA. 2. Light silvery blue; an enormous spike; full and well finished, with large bells. A very lovely shade of blue in Hyacinths.

GENERAL DE WET. 2. Soft light pink; a fine spike with large bells. Pink sport of the well-known variety, Grand Maitre.

GERTRUDE. 1. Dark pink; strong, compact spike. A variety used largely by commercial florists on account of its earliness.

GRAND MAITRE. 2. Dark lavender-blue; large bells, and very long, well-filled truss, on an unusually strong stem.

KING OF THE BLUES. 4. Deep dark blue; splendid spike and bell. Excellent for late forcing.

LADY DERBY. 1. Clear rose-pink variety. A splendid forcing variety as the strong stems hold the truss well. Considered the finest rose-pink Hyacinth.

LA GRANDESSE. 3. Pure white flowers with waxy bells on long, full spike of perfect form.

LA VICTOIRE. 1. Bright, glistening carmine-rose; under glass this variety is a fine dark pink; well-filled spike on a strong stem.

L'INNOCENCE. 1. Pure white; fine truss of large bells, of great substance.

LORD BALFOUR. 1. Lilac-rose, tinged dark violet—a distinct color. The best Hyacinth of this color.

MENELIK. 2. Deep black-blue; large, well-formed truss with bells of good size, best of the so-called "blacks."

ORANGEBOVEN. 4. A very lovely and distinct color, different from all the others, perhaps best described as a ruddy apricot. This variety does not make a very large bulb.

PERLE BRILLANTE. 2. Light blue, lavender, big bells on a large, finely formed, stiff spike.

PRINCE HENRY. Clear Naples yellow. Long, narrow truss, with good bells and stem. A splendid new yellow variety.

QUEEN OF THE PINKS. 3. Very bright rose-pink, of unusually clear tone; large spike with large bells.

SCHOTEL. 1. Soft light blue; very long and perfect truss, with large bells; easily forced.

YELLOW HAMMER. 1. Creamy yellow; compact spike and large bells.



These large spikes of Dutch Hyacinths were produced from our Exhibition Grade

Special Offer. We place large contracts for the above varieties and thus secure the pick of the crop. This enables us to offer at a uniform price of 35 cts. each, \$3.50 per doz., \$25 per 100.



Clara Butt

Mrs. Potter Palmer

Edmee

Dream

FOUR POPULAR DARWIN TULIPS

THE modern garden is usually planted to a color scheme. The illustration above suggests the planting of your flower borders in blocks of 25, 50, or 100 of a variety, with a definite color scheme in mind. The four varieties suggested, when planted in the order given, will produce a very lovely color scheme. The lilac and mauve coloring of Dream, followed by the brighter cherry-rose tone of Edmee, and this followed by the bright violet of Mrs. Potter Palmer, with the beautiful pure salmon-pink Darwin, Clara Butt, form a very effective color scheme. They are quite the least expensive of the Darwin Tulips and will always remain prime favorites.

	Doz.	100	1,000		Doz.	100	1,000
Dream	\$0 60	\$4 00	\$38 00	Mrs. Potter Palmer.....	\$0 60	\$4 00	\$38 00
Edmee	70	5 00	48 00	Clara Butt	50	3 50	32 00

SPECIAL COLLECTION OFFER

25 bulbs each of the above 4 varieties,	100 bulbs	\$4 00
50 bulbs each of the above 4 varieties,	200 bulbs	7 75
100 bulbs each of the above 4 varieties,	400 bulbs	15 00
250 bulbs each of the above 4 varieties,	1,000 bulbs	35 00

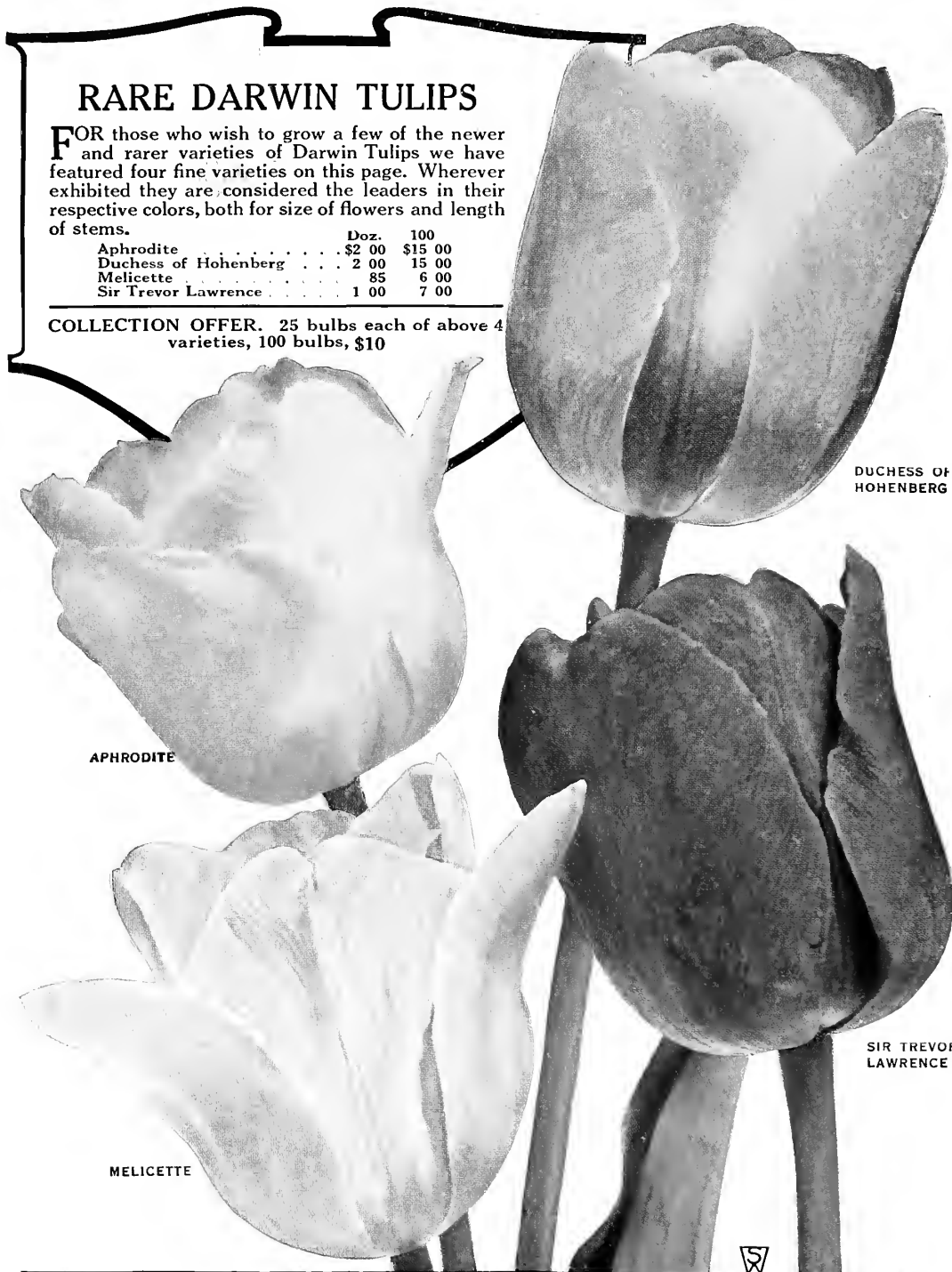
NOTE. For complete description of the varieties mentioned above see pages 4 to 7. These prices are 25 per cent lower than will appear in our regular Fall Bulb Catalogue

RARE DARWIN TULIPS

FOR those who wish to grow a few of the newer and rarer varieties of Darwin Tulips we have featured four fine varieties on this page. Wherever exhibited they are considered the leaders in their respective colors, both for size of flowers and length of stems.

	Doz.	100
Aphrodite	\$2 00	\$15 00
Duchess of Hohenberg	2 00	15 00
Melicette	85	6 00
Sir Trevor Lawrence	1 00	7 00

COLLECTION OFFER. 25 bulbs each of above 4 varieties, 100 bulbs, \$10



DUCHESS OF HOHENBERG

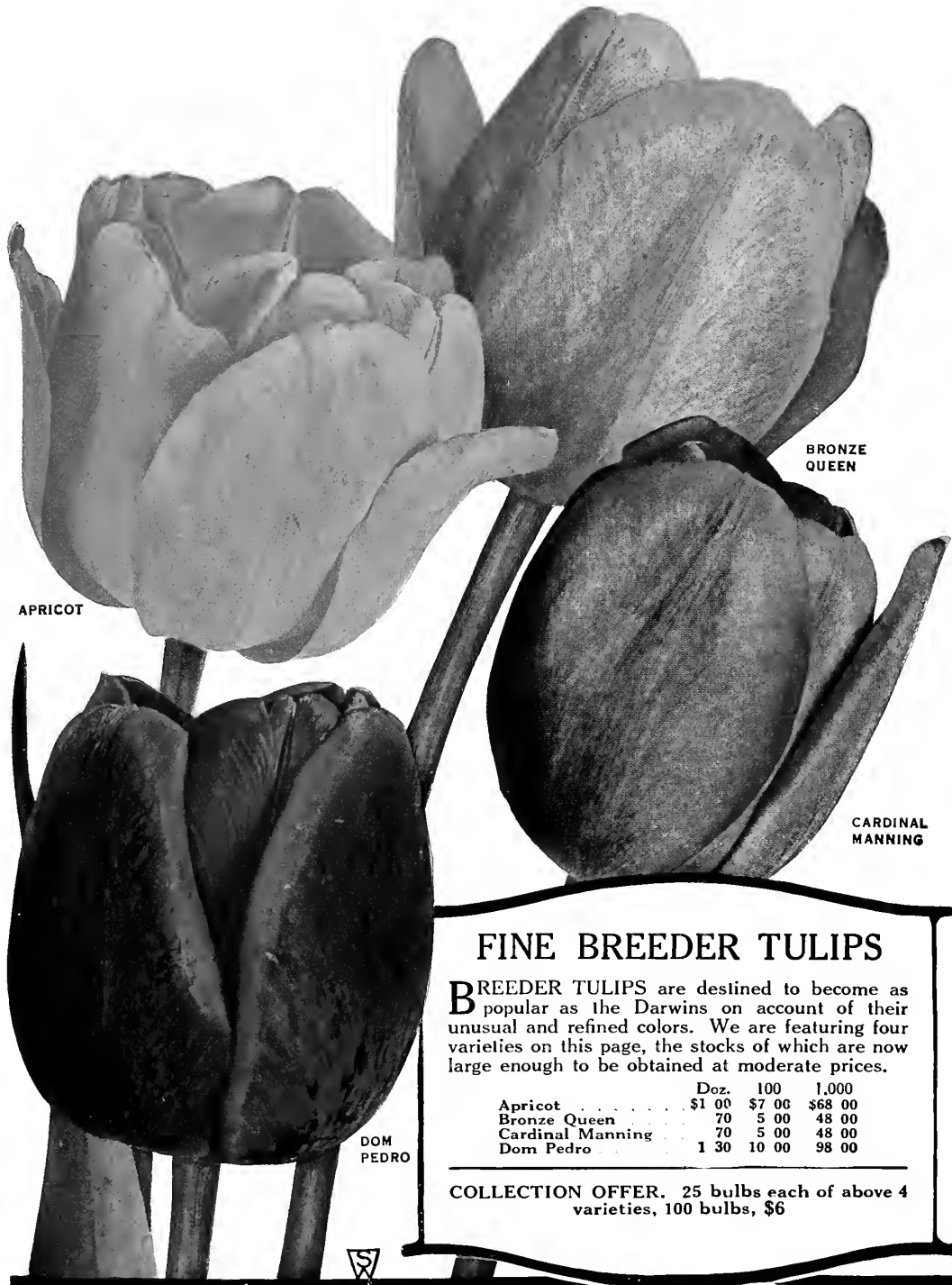
APHRODITE

SIR TREVOR LAWRENCE

MELICETTE

For complete descriptions of varieties of Darwin Tulips listed above see pages 4 to 7

NOTE. These prices are 25 per cent lower than will appear in our regular Fall Bulb Catalogue



FINE BREEDER TULIPS

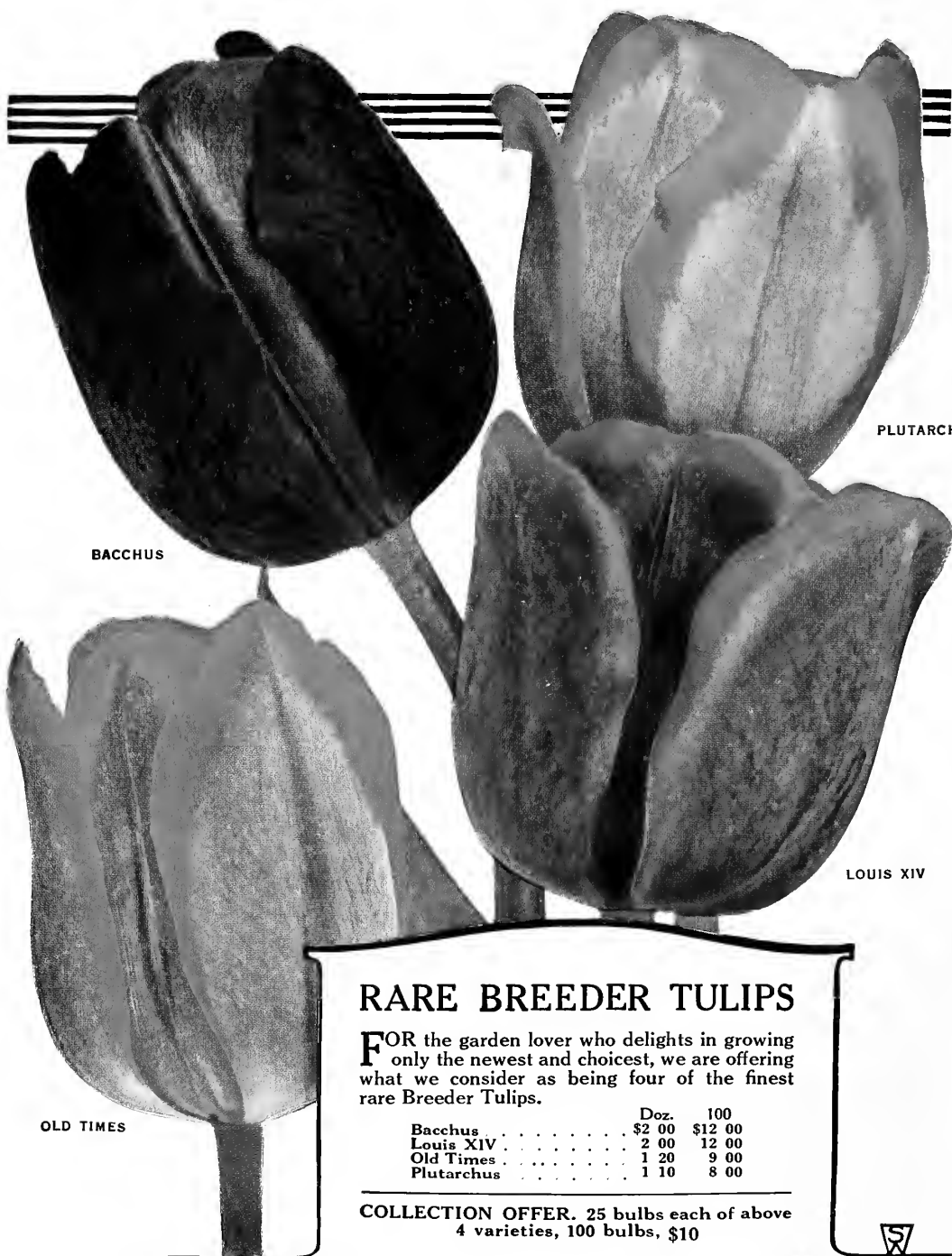
BREEDER TULIPS are destined to become as popular as the Darwins on account of their unusual and refined colors. We are featuring four varieties on this page, the stocks of which are now large enough to be obtained at moderate prices.

	Doz.	100	1,000
Apricot	\$1 00	\$7 00	\$68 00
Bronze Queen	70	5 00	48 00
Cardinal Manning	70	5 00	48 00
Dom Pedro	1 30	10 00	98 00

COLLECTION OFFER. 25 bulbs each of above 4 varieties, 100 bulbs, \$6

For complete descriptions of Breeder Tulips listed above see pages 8 and 9

NOTE. These prices are 25 per cent lower than will appear in our regular Fall Bulb Catalogue



BACCHUS

PLUTARCHUS

LOUIS XIV

OLD TIMES

RARE BREEDER TULIPS

FOR the garden lover who delights in growing only the newest and choicest, we are offering what we consider as being four of the finest rare Breeder Tulips.

	Doz.	100
Bacchus	\$2 00	\$12 00
Louis XIV	2 00	12 00
Old Times	1 20	9 00
Plutarchus	1 10	8 00

COLLECTION OFFER. 25 bulbs each of above 4 varieties, 100 bulbs, \$10



For complete descriptions of varieties of Breeder Tulips listed above see pages 8 and 9

NOTE. These prices are 25 per cent lower than will appear in our regular Fall Bulb Catalogue



MATCHLESS BEDDING HYACINTHS

Special named varieties in distinct shades of color, to flower at the same time

BULBS MEASURE 7 TO 8 INCHES IN CIRCUMFERENCE

The Hyacinth chosen to represent each of the following shades of color is a variety which, we have found from trials, will be best in the three essential requirements: Best in its color; stoutest stem; largest truss of bells; so our customers will know that we have avoided using such varieties that are of weak stem, and that do not support the blooms.

SPECIAL NOTICE: *Owing to the unprecedented demand in Holland from such countries as Sweden, Norway, Denmark, and Germany, for Hyacinth Bulbs, the supply is less than the demand. This has resulted in greatly increased prices. During the war, Hyacinth culture in Holland was greatly reduced, owing to the lack of European demand. These new markets have now opened, with the result that Hyacinths are now at a premium. Rather than contract for inferior sizes, we were obliged to raise our prices.*

CULTURE

These Hyacinths should be planted from 6 to 10 inches apart, and covered with at least 4 inches of soil from the top of the bulb. For beds or borders close to the conservatory or dwelling, 6 inches will make a fine display; but where the beds are planted to be viewed from a distance, they may be planted 10 inches apart. Hyacinths planted alternately with narcissi produce a most graceful effect, and for this combination 6 inches from bulb to bulb is also a very suitable distance. It is advisable to cover, after the bulbs have been planted, with leaves or some heavy material that will prevent them from freezing or being affected by early spring frosts after they have started.

Hyacinths, as well as narcissi, should be planted by November first in this latitude, as they are the better for early planting. Tulips may be planted up to December first, weather permitting.

Delivered (by Express or Parcel Post) anywhere in the United States

	Doz.	100	1,000
Matchless Bedding Scarlet	\$2 00	\$15 00	\$140 00
Matchless Bedding Light Pink	2 00	15 00	140 00
Matchless Bedding Dark Pink	2 00	15 00	140 00
Matchless Bedding Light Blue	2 00	15 00	140 00
Matchless Bedding Dark Blue	2 00	15 00	140 00
Matchless Bedding Pure White	2 00	15 00	140 00
Matchless Bedding Mauve	2 00	15 00	140 00
Matchless Bedding Deep Yellow	2 00	15 00	140 00

Suggestions for Effective Color Combinations

1. Matchless Bedding Pink and Light Blue.
2. Matchless Bedding Light Blue and Deep Yellow.
3. Matchless Bedding Light Blue and Dark Blue.
4. Matchless Bedding Dark Blue and Deep Yellow.



Miniature Hyacinths

French Roman Hyacinths

French Roman Hyacinths are among the earliest bulbs to be had in flower. The bulbs arrive from France late in August, and, like all bulbs grown in the south of France, they may be had in flower from November all through the winter months, if potted up in September and at intervals of every two weeks. They are much prized for pots or cutting on account of their graceful appearance and delicate fragrance. The bulbs are about the same size as the Miniature Dutch Hyacinths offered on this page, and may be planted six or seven to a 5- or 6-inch pot, or ten to twelve bulbs to an 8- or 9-inch bulb-pan. The flowers are smaller than those of the Dutch Hyacinth, and are borne in great profusion, the larger bulbs frequently having three to five graceful spikes of bloom. Their ease of culture and earliness of bloom suggest their use. The white variety is the most reliable. They are not hardy in our northern climate, and should not be planted outdoors. The general culture given for Hyacinths on page 17 is suggested.

	Doz.	100	1,000
White. Mammoth bulbs, 12 to 15 cmts.....	\$2 50	\$16 00	\$150 00
Jumbo bulbs, 13 to 15 cmts.....	3 00	2 00	180 00
Single Rose. First-size bulbs.....	1 30	10 00	95 00
Single Blue. First-size bulbs.....	1 30	10 00	95 00

Our patrons desiring Hyacinths for culture in glasses are advised to select varieties from page 16. We offer Hyacinth Glasses, both Belgian and Tye shape, at 45 cts. each, \$4.50 per doz.

Prepared, or Treated Dutch Hyacinths

These Hyacinths are given a special treatment in heated warehouses to advance the final development of the embryo flower and thereby make it possible to have them in bloom about three weeks before the others offered in our list. The bulbs are not as large as our Matchless Bedding or Second Size Hyacinths, but if potted early and given ample time to develop strong roots, will bloom early. We offer five distinct varieties.

L'Innocence. White. **Schotel.** Light blue.
Lady Derby. Rose-pink. **Laura.** Violet-blue.
Nimrod. Delicate rose.

Price, any of the above, 30 cts. each, \$3 per doz.,
 \$20 per 100

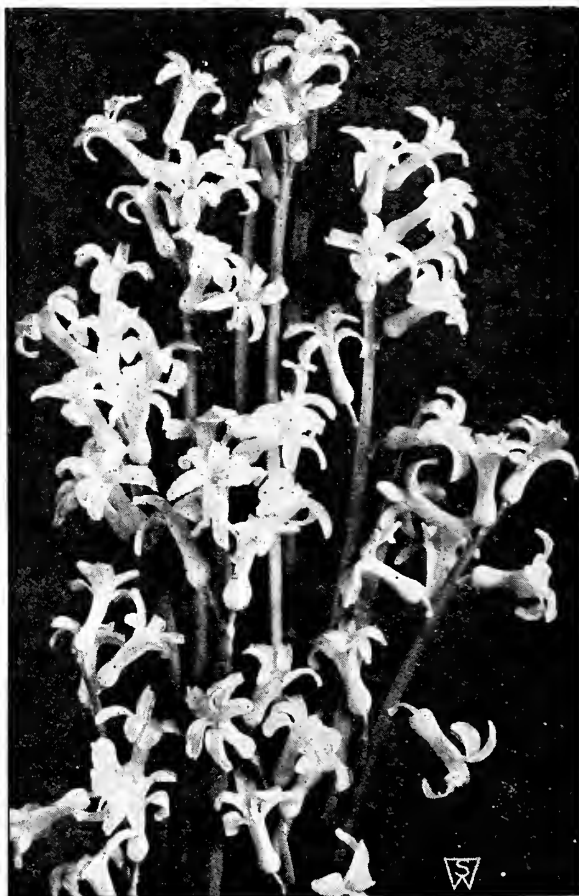
Miniature Hyacinths

DUTCH ROMANS

These Hyacinths are the same type as our Exhibition Hyacinths and our Matchless Bedding, except that they are small bulbs averaging 1½ to 1¾ inches in diameter. They are splendid for growing in 6-inch pans, and it is advisable to grow one color of a variety in each pan. Largely used by commercial florists for Easter trade. We offer four fine varieties.

City of Haarlem. Yellow. **Gertrude.** Dark pink.
Grand Maitre. Lavender. **La Grandesse.** White.
 blue.

Price, any of the above, 10 cts. each, \$1 per doz.,
 \$8 per 100



French Roman Hyacinths

Polyanthus Narcissi

BUNCH-FLOWERING

VARIETIES FOR EARLY INDOOR GROWING

Not for Outdoor Planting, except south of the Carolinas

READY FOR DELIVERY OCTOBER 1

We are offering two varieties of this splendid type of Narcissus which are now universally grown indoors in pots of fiber or soil as well as in pebbles and water. The varieties are Paper-White Grandiflora, the popular bunch-flowering white variety, and Grand Soleil d'Or, the popular yellow bunch-flowering variety. These bulbs are produced for us by an expert grower in the South. The importation from France is no longer permitted.

Dishes of these, grown in pebbles and water, may be had in bloom continuously from Thanksgiving until Easter. The best method is to keep your bulbs in the containers in which they are shipped to you and to store them in a moderately cool, dry place. Plant different lots every three weeks from October 1 until March 1, and you can enjoy a constant succession of bloom.

Grand Soleil d'Or. This popular bunch-flowering variety of the Polyanthus type is as easy to grow in pebbles and water as in soil or our Shurgrow Bulb Fiber. The flowers are a clear sunny yellow, with bright orange cups. **\$2.50 per doz., \$18 per 100, \$160 per 1,000.**

Paper-White Grandiflora. The popular, bunch-flowering pure white Narcissus, frequently having thirty individual blooms and splendid decorative foliage from a single bulb. We offer two sizes, each suitable for growing indoors in pebbles and water or in our Shurgrow Bulb Fiber.

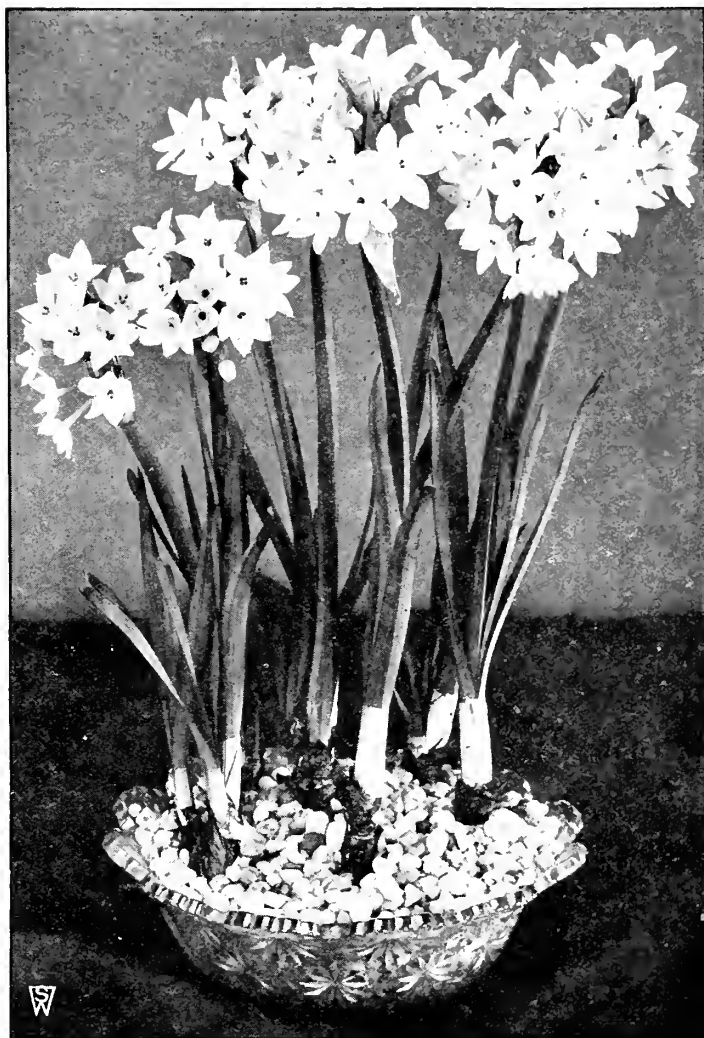
	Doz.	100	1,000
First-Size Bulbs	\$1 00	\$7 00	\$60 00
Jumbo Bulbs	1 25	8 00	70 00

Cultural Directions for Growing Polyanthus Narcissi in Pebbles and Water

Fill a deep dish almost full of pebbles and press the Narcissus bulbs down in the pebbles until they are nearly covered; then add water to the top of pebbles. Put in a reasonably dark place for three weeks, or until the bulbs are well rooted, then bring to the light and watch them grow and bloom, which will be from seven to eight weeks from time of planting.

They can also be grown in Holland fiber or any good soil well watered, but the pebbles make the most attractive appearance for table decorations.

Do not keep the growing plants near steam-pipes or radiators, as excessive heat causes too rapid growth of foliage with no blossoms. Do not cover with too much water as it is liable to soften and rot the bulbs.



Paper-White Grandiflora Narcissi growing among pebbles in water

SPECIAL OFFER. Containers and Materials for Growing Paper-White and Grand Soleil d'Or Narcissus Indoors.

Glass Bowls. Suitable to plant 3 bulbs. 35 cts. each, \$3.50 per doz.

Glass Bowls. Suitable to plant 6 bulbs. 50 cts. each, \$5 per doz.

Pebbles. Carefully screened and selected. Quart box, 20 cts., 2 qts. 35 cts.

Shurgrow Bulb Fiber. This is a prepared Fiber containing all the ingredients for producing blooms from bulbs indoors. It can be used for any dish, as it does not require drainage. Put up in quart package convenient for use. 15 cts. per qt., \$1.50 per doz. qts.

Double Narcissi (Daffodils)

The Double-flowering Daffodils offered in our list may be planted outdoors, but are admirably adapted for indoor growing in pots and pans, or may be forced in flats for cutting purposes. We have listed this year, two of the newer varieties of Double Daffodils, which are splendid for pot-culture but are excellent for outdoor planting as well; owing to the flowers of American-grown Von Sion Narcissus showing a tendency to "come green," we have decided to omit it from our list.

Argent. C. This variety is best described as a Double Incomparabilis. Very pale primrose perianth with a double row of petals; chrome-yellow cup. A fine new Double Daffodil with a strong stem. Height 14 inches. **20 cts. each, \$2 per doz., \$15 per 100, \$120 per 1,000.**

Dubloon. B. Similar in type to the variety Argent, except in color which is a deep yellow, center shaded orange; very beautiful flowers, bold stiff stems. Height 13 inches. **20 cts. each, \$1.50 per doz., \$12 per 100, \$110 per 1,000.**



Double Narcissus, Von Sion

NARCISSI or DAFFODILS

No garden would be complete without the Narcissus or Daffodil. The innumerable positions in the garden in which their use may be availed of is responsible for their popularity. It is not only for garden culture that they are largely used, but many of the varieties are extensively grown in pots or pans for indoor decoration during late winter months. Some varieties in our list may be forced into bloom as early as January. Their simple beauty of form, dignity of habit, elegance of bloom and ease of culture, account for the new interest amounting to enthusiasm of flower-lovers all over Europe. Each year we are greeted with a profusion of novelties, many of which, on account of the high prices, are not available for immediate use.

All the varieties of Narcissi or Daffodils offered in our catalogue, with the exception of the Polyanthus Narcissus and such other few sorts as are especially noted, are perfectly hardy, and will continue to flower outdoors each year if given a congenial location and not disturbed. Where they are used for bedding, and must be lifted, it is wise to permit bulbs to remain after flowering until the foliage turns brown down to the ground, then lifted, and the earth shaken from the bulbs; they should be stored in a cool, dry place. Narcissi, like hyacinths, should be planted by early November, and should not be allowed to remain out of the ground so long as tulips, which may be planted up to hard frost.

CULTURE.—Owing to the various sizes of the bulbs, it is not advisable to state the exact depth to plant, but the simple rule of covering the bulb one and a half times its own depth, and making the distance between the bulbs 3 to 4 inches for the smaller sorts and 5 to 6 inches for the larger ones, is a good one. For greenhouse or window-garden culture treat them the same as hyacinths, except that three or more bulbs of one variety should be planted in a pot, and not single specimens.

Where a succession of blooms is desired for outdoors as well as indoors, we have arranged the following code: A, first early; B, second early; C, midseason; D, late; E, very late.

NOTE.—In describing Daffodils, Narcissi, etc., we have referred to the "perianth" and "trumpet," "crown" or "cup." The "perianth" is the surrounding row of petals or wings, and the other terms apply to the central funnel-like tube.



Giant Trumpet Narcissi

1. Van Waveren's Giant.
2. King Alfred.

3. Glory of Noordwijk.
4. Spring Glory.

SPECIAL NOTICE

American-Grown Daffodil Bulbs

As we were advised in the fall of 1923 by the Federal Horticultural Board that importation of Holland Daffodil bulbs, for commercial sale, would be restricted from entry into the United States after January, 1926, we began immediately to experiment with the production of this much-loved spring-flowering bulbous plant in this country. After extended experiments, we proved that the stock grown at our Long Island farms produced bulbs of high quality, some of the varieties producing hardy, sound, heavier stock than could be grown in Holland.

Giant Trumpet Varieties, Including New and Rare Sorts

The flowers of the Giant Trumpet varieties are of large size; the "perianth," or wing-like petals, according to the variety, measure from 2 to 4 inches across, and the "trumpets," or central funnel-like tubes, vary from 3 to 4 inches in length. Flowers are borne on strong, stiff stems, from 12 to 18 inches high.

Duke of Bedford. B. White perianth, with loose, spreading petals and long, deep yellow trumpet well frilled at the mouth. The marked contrast in color between the deep trumpet and the glistening white perianth is very effective. A splendid exhibition sort. Height 16 inches. 40 cts. each, \$4 per doz., \$30 per 100.

Emperor. C. Perianth deep primrose-yellow, trumpet rich yellow; a very large flower. Excellent for naturalizing or forcing. Height 18 inches. 20 cts. each, \$1.75 per doz., \$12 per 100, \$110 per 1,000.

Empress. C. White perianth of great substance; trumpet rich chrome-yellow. Showy for border or naturalizing. Does equally well forced. Height 18 inches. 20 cts. each, \$1.75 per doz., \$12 per 100, \$110 per 1,000.

Giant Trumpet Narcissi, continued

Glory of Leyden. C. Perianth pale yellow, broad and spreading, very long trumpet of golden yellow; enormous flower of great vigor and substance. An especially fine variety for borders and excellent for pot culture. Should not be forced hard. Must be planted early. Height 15 inches. **25 cts. each, \$2.50 per doz., \$15 per 100.**

Glory of Noordwijk. B. One of the best and most attractive of the Bicolors; perianth sulphur-white, trumpet chrome-yellow, very long and elegantly reflexed at the brim; of good size and substance. Grand for pots or cutting. Height 14 inches. **25 cts. each, \$2.50 per doz., \$15 per 100.**

Golden Spur. A. A very good variety, both perianth and trumpet being of a rich yellow color; foliage very broad and striking. It is of unusually robust habit and unsurpassed for garden, pots, or forcing. Early and extremely free flowering. Height 18 inches. **Jumbo bulbs, 15 cts. each, \$1.75 per doz., \$12 per 100, \$110 per 1,000.**

King Alfred. C. A king among the new varieties, one that responds splendidly to forcing and one that you should grow a few of. For pans or pots for exhibition, its size, general vigor, and depth of color put it in a distinct class of the **Finest Giant Golden Yellow Narcissi**. Wherever this Narcissus has been exhibited it has caused a sensation. Perianth often measures 4 inches across; trumpet fully 2 inches. **Jumbo Bulbs, 35 cts. each, \$3.50 per doz., \$25 per 100.**

Mme. de Graaff. C. Pure white perianth, trumpet primrose passing into white, well formed at the brim. A good white for exhibition, or growing in pots or pans for decoration. Bulbs should be removed from containers immediately upon receipt and planted; if permitted to remain will quickly decay. Height 15 inches. **25 cts. each, \$2.50 per doz., \$15 per 100.**

Olympia. B. Perianth light chrome-yellow, trumpet deep chrome-yellow; of huge dimensions. Splendid exhibition sort; a variety in the same class as King Alfred; of wonderful constitution and size. Height 15 inches. **35c. each, \$3.50 per doz., \$25 per 100.**

Spring Glory. B. Clear white perianth with long petals of splendid form, long trumpet of deep yellow, well reflexing at the brim. A very vigorous grower and one of the best of the newer Daffodils for pot culture. **35 cts. each, \$3.50 per doz., \$25 per 100.**

Treserve. B. Yellow Trumpet. Perianth primrose-yellow, slightly hooded; very large trumpet of rich canary-yellow, broad at the mouth and deeply flanged. Height 17 inches. **65 cts. each, \$6.50 per doz., \$50 per 100.**

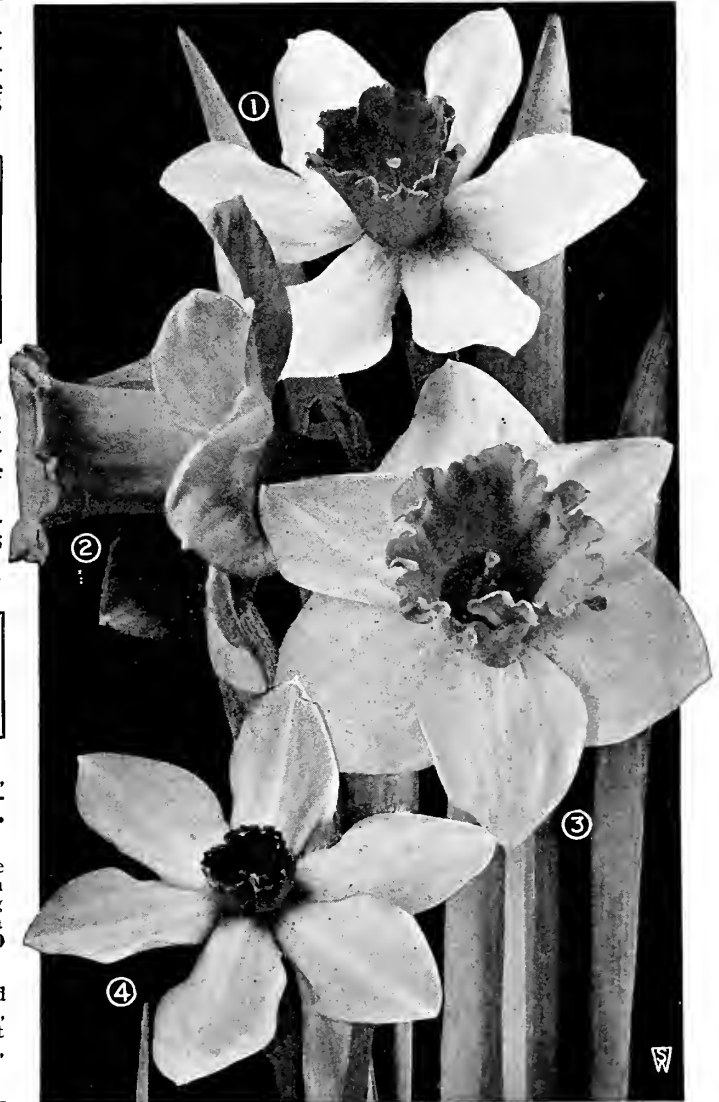
Vanilla. C. This is a grand, tall-growing and very handsome variety, having a fine, bold trumpet of deep yellow, with a paler perianth, and possessing the added charm of a most pleasing and delicate odor. It flowers the same time as Emperor, and is a good variety for forcing. Height 20 inches. **25 cts. each, \$2.50 per doz., \$15 per 100.**

Van Waveren's Giant. B. Bicolor Trumpet. Broad perianth of campanulate form, bright yellow trumpet with very large, open mouth flanged at brim. Huge flower of vigorous habit and very showy character. Height 17 inches. **60 cts. each, \$6 per doz., \$40 per 100.**

Weardale Perfection. Perianth milk-white with broad, overlapping petals; long trumpet of primrose-yellow; elegantly fluted at the mouth. A good grower and free bloomer. **60 cts. each, \$6 per doz., \$40 per 100.**

VICTORIA B

A Bicolor famous for its large and durable flowers which stand boldly erect; broad perianth of creamy white; large, broad, fluted trumpet of rich yellow. A strong grower, with massive flowers. Fine for forcing, the flowers lasting in excellent condition long after being cut. Height 16 inches. **Jumbo Bulbs, 15 cts. each, \$1.75 per doz., \$12 per 100, \$110 per 1,000.**



Giant and Medium Trumpet Narcissi

1. Sir Watkin (Medium).
2. Empress (Giant).

3. Victoria (Giant).
4. Conspicuous (Medium).

Giant Trumpets in Mixture. In order to encourage the more liberal use of this splendid spring-flowering bulbous plant in the woodlands and shrubbery borders, we are growing a splendid range of seedling varieties for this purpose and offer selected bulbs at \$7 per 100, \$60 per 1,000.

Medium Trumpet Narcissi, or Daffodils

This is also a very popular type or rather types of the Narcissus or Daffodil family. Splendid for garden culture, in pots or pans, or in flats, for cut-flowers.

The following varieties are grouped in some catalogues under the headings, Barrii, Incomparabilis and Leedsii types.

NOTE.—“*Perianth*” is surrounding row of petals, or wings; “*crown*” or “*cup*” is the central cup or funnel-like tube.

BARRII. Daffodils belonging to this group are crosses between Yellow Giant Trumpets and the Poet’s Narcissi. The crown usually is not over one-third the length of the perianth petals.

INCOMPARABILIS. The Incomparabilis varieties are also crosses between the Yellow Giant Trumpets and the Poet’s Narcissi, but the crowns are larger than those of the Barrii group, sometimes being three-fourths of the length of the perianth petals. The color of the perianth is either yellow or white.

LEEDSII. These are crosses between White Giant Trumpets and the Poet’s Narcissi. The crowns are as large as those of the Barrii and Incomparabilis groups, but the perianth petals are always white, and the crowns are mostly white or light yellow.

Autocrat. (Incomparabilis.) C. Clear golden yellow; broad perianth tending to reflex, cup widely expanded at the mouth. A very handsome variety for the border or pots. Height 20 inches. 20 cts. each, \$2 per doz., \$12 per 100.

Bernardino. (Incomparabilis.) Very large, creamy white perianth of great substance; large cup of pale lemon-yellow, flushed and edged pinkish apricot, and very heavily frilled. Height 20 inches. 60 cts. each, \$6 per doz., \$40 per 100.

Conspicuous. (Barrii.) C. Large, broad-spreading perianth of pale yellow, short darker yellow cup, brightly edged orange-scarlet. Splendid for midseason forcing, and good for any position in the garden. Height 21 inches. 15 cts. each, \$1.50 per doz., \$10 per 100, \$95 per 1,000.

Duchess of Westminster. (Leedsii.) C. Pure white perianth; anth; cup pale canary-yellow, slightly darker at the edge, passing into ivory-white; large star-like flower of exquisite beauty. One of the best of the Leedsii for exhibition. Height 16 inches. 20 cts. each, \$2 per doz., \$12 per 100.

Lady Godiva. (Barrii.) C. Large, spreading perianth of pure white, cup large, pale yellow, edged orange-scarlet. A splendid variety in every way; excellent if planted out in combination with the variety Conspicuous. Height 18 inches. 25 cts. each, \$2.25 per doz., \$15 per 100.

Lady Moore. (Barrii.) C. A stately flower with a creamy white perianth, and a large, dark yellow cup, edged orange-scarlet. A variety that is very striking in appearance and sure to be appreciated by discriminating Daffodil lovers. 75 cts. each, \$7.50 per doz., \$60 per 100.

Lord Kitchener. (Leedsii.) Large, snowy white perianth, broad and flat, of great substance; big crown of the palest primrose, widely open at mouth and elegantly crimped and fluted at the brim. A flower of perfect quality, refinement and distinction, highly valued as one of the most desirable in its class. Height 21 inches. 40 cts. each, \$4 per doz., \$30 per 100.

Lucifer. (Incomparabilis.) C. Perianth sulphur-white, with long, well-rounded petals; cup chrome-yellow, with intense orange-scarlet suffusions. A bold, showy flower for outdoors, holding its color well, and splendid for exhibition. Height 18 inches. 15 cts. each, \$1.50 per doz., \$10 per 100, \$95 per 1,000.

Masterpiece. (Barrii.) Perianth sulphur-white with broad, very round petals of great substance and Poeticus character, eye orange-scarlet, quite flat and beautifully crinkled, the color covering the entire surface of the inch-wide eye. Height 22 inches. Unusually attractive and most desirable. 65 cts. each, \$6.50 per doz., \$50 per 100.

Mrs. Langtry. (Leedsii.) D. A remarkably free-flowering variety, each bulb usually producing several flowers; broad white perianth, white cup opening pale primrose. On account of its low price it is largely used for naturalizing. It is good, also, for potting. Height 16 inches. 15 cts. each, \$1.25 per doz., \$8 per 100, \$75 per 1,000.

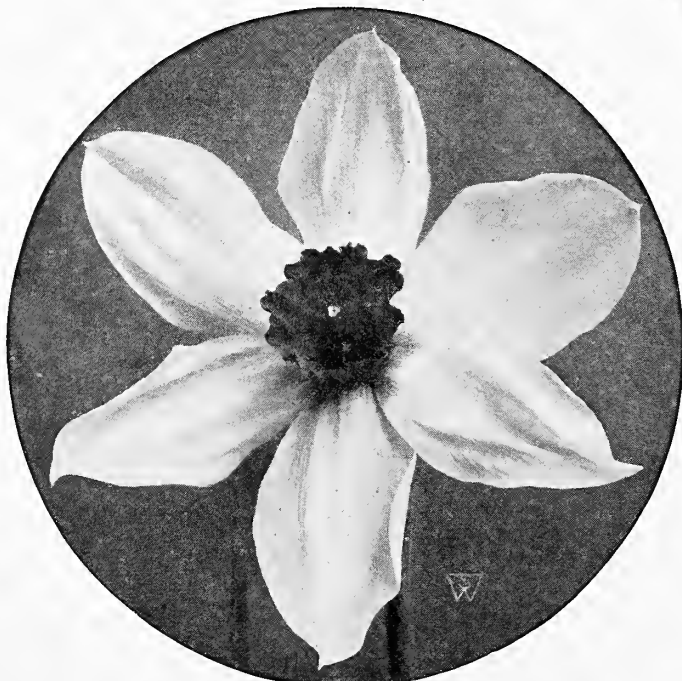
Queen of the North. (Leedsii.) C. Broad, large perianth of clear, glistening white and remarkable texture; cup soft primrose-yellow, with narrow rim of sulphur-white. A splendid Leedsii variety for either indoor or outdoor culture. Height 18 inches. 15 cts. each, \$1.50 per doz., \$10 per 100, \$95 per 1,000.

Red Beacon. (Barrii.) Broad white perianth of splendid substance, with broad well-frilled cup of dazzling orange-scarlet. A very striking variety on account of its brilliant coloring due to the scarlet center. 50 cts. each, \$5 per doz., \$35 per 100.

Sir Watkin. (Incomparabilis.) C. Perianth primrose-yellow; large and well-formed yellow cup, tinted deep yellow. A giant among the Medium Trumpet sorts. A grand flower of wonderful substance for garden culture or pots, this variety frequently has flowers 5 inches across, and its splendid proportion and ease of culture cause it to be one of the most popular of the older varieties. Height 18 inches. 15 cts. each, \$1.75 per doz., \$12 per 100, \$110 per 1,000.

White Lady. (Leedsii.) C. Broad, white perianth of perfect form; small cup of pale canary, beautifully crinkled. A new sort that is conceded to be one of the best. Fine for outdoor planting, making a splendid cut-flower; good for pot culture also. Height 20 inches. 15 cts. each, \$1.50 per doz., \$10 per 100, \$95 per 1,000.

Will Scarlett. (Incomparabilis.) Creamy white perianth; cup widely expanded and of a brilliant orange-scarlet, elegantly frilled. Very bright, and one of the nearest reds. 30 cts. each, \$3 per doz., \$20 per 100.



Medium Trumpet Narcissus, Lucifer



Narcissus Poetaz, Aspasia

Narcissus Poetaz

THE HARDY CLUSTER-FLOWERED POET'S NARCISSUS

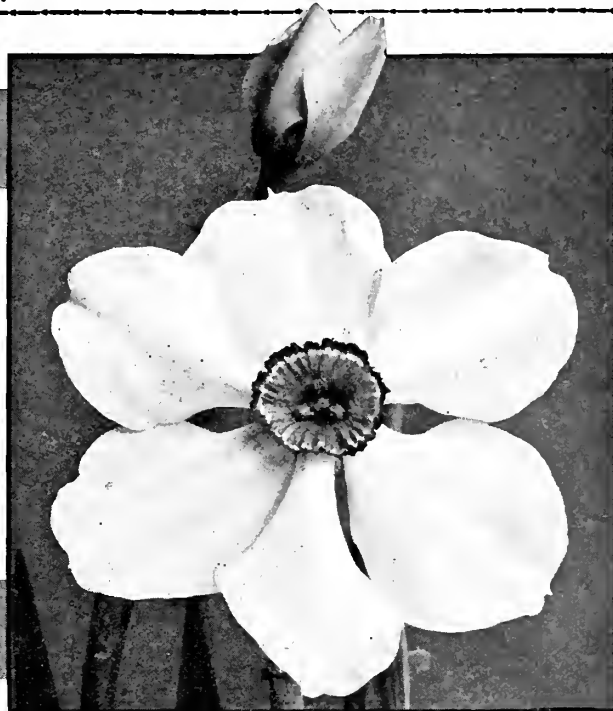
The chief characteristics of this type of Narcissus is that hybridizers by crossing the strong-scented Polyanthus varieties with the Poeticus type, developed a hardy strain of Daffodils which has the bunch-flowered character of the Polyanthus with larger flowers similar to the Poet's described on this page. They are excellent for pot culture or are splendid for the garden border.

ASPASIA. C. Perianth pure white, with soft yellow eye; three or four flowers on a stem. One of the best of this class and especially bright in color. Height 18 inches. 15 cts. each, \$1.75 per doz., \$12 per 100, \$110 per 1,000.

IDEAL. C. Perianth pure white, with a dark orange eye; three or four flowers on a stem. A very easy variety to get in flower in pots and very charming on account of the size of the flowers and striking contrast of the dark orange eye. Height 18 inches. 15 cts. each, \$1.75 per doz., \$12 per 100, \$110 per 1,000.

KLONDYKE. B. Perianth an even tone of pure bright yellow, with golden yellow eye. A variety of wonderful vigor and size giving five to six flowers on a stem. Height 15 inches. 25 cts. each, \$2.50 per doz., \$20 per 100.

LAURENS KOSTER. B. Perianth pure white, with soft yellow eye. A variety that is much admired on account of the large size of the flowers. It is a strong grower, frequently having five flowers on a stem. Height 18 inches. 15 cts. each, \$1.75 per doz., \$12 per 100, \$110 per 1,000.



Narcissus Poeticus, King Edward VII

The Poet's Narcissi

Narcissus poeticus

This class of Narcissus, instead of having a trumpet or crown, has a small, wide-mouthed cup. They are very hardy, and are used in large numbers for naturalizing, their simplicity of form and delightful fragrance making them highly prized. Cassandra, Epic, King Edward VII, and Ornatus are used with excellent success for growing indoors in pots or pans, or gently forced into bloom for cutting purposes.

POETICUS (Pheasant's Eye). D. The original late-flowering Pheasant's Eye variety so popular for gardens and naturalizing, pure white flowers with orange cup, edged with red. Height 15 inches. 10 cts. each, \$1 per doz., \$8 per 100, \$75 per 1,000.

POETICUS ORNATUS (Improved Poeticus). C. Grand flower for cutting. Larger and more symmetrical than the old variety and considerably earlier. Pure white flowers, saffron cup, tinged rosy scarlet. Magnificent cut-flower. Height 15 inches. 15 cts. each, \$1.25 per doz., \$9 per 100, \$85 per 1,000.

POETICUS, KING EDWARD VII. C. Round, white perianth, cup light yellow, margined deep red. A vigorous grower, excellent for pot culture. Height 15 inches. 15 cts. each, \$1.50 per doz., \$10 per 100, \$95 per 1,000.

POETICUS, HORACE. C. Quite the best and largest of the new Poet's varieties. The white perianth is of large size, cup canary-yellow, rimmed bright red. Height 17 inches. 25 cts. each, \$2.50 per doz., \$20 per 100.

Sweet-Scented Jonquils

Very much prized for their deliciously scented golden flowers; perfectly hardy in gardens or naturalized, also admirably adapted to indoor culture in pots or soil.

We frequently receive orders for Jonquils when the Giant Trumpet Daffodils are desired. We ask our patrons to select varietal name in order to avoid the confusion caused thereby. The Jonquils listed below belong to a distinct type of the Narcissus family. The foliage is rush-leaved, and the flowers are borne in clusters of four or five on each stem, and should not be confused with the Giant and Medium Trumpet Daffodils in our list. We have decided to discard the common Single and Double Jonquils in favor of the following sorts.

Giant Campernelle rugulosus. Much larger and finer than the old favorite Campernelle Jonquils; a much freer bloomer and much more desirable, especially for forcing. Beautiful, single, yellow, star-shaped flowers, exquisitely imbricated, borne in clusters of four to six on a stem; delightfully fragrant. Also very hardy and valuable for outdoor planting. 15c. each, \$1.50 per doz., \$10 per 100, \$95 per 1,000.

Rugulosus, Double. The double form of the large-flowering Campernelle Jonquils. Large, double, yellow flowers; very fragrant and much superior to the common Double Jonquils. Height 20 inches. 15 cts. each, \$1.50 per doz., \$10 per 100, \$95 per 1,000.

CHINESE SACRED LILY

The "Shui Sin Far," or Water Fairy Flower, Joss Flower or Flower of the Gods, etc., as it is called by the celestials, is a variety of Narcissus, bearing in profusion chaste flowers of silvery white, with golden yellow cups. They are of exquisite beauty and entrancing perfume.

The bulbs, of large size and great vitality, are of luxuriant growth, producing several spikes of flowers; the incredibly short time required to bring bulbs into bloom (four to six weeks after planting) is one of the wonders of nature. You can almost see them grow, succeeding almost everywhere and with everybody. They do well in pots of earth, but are more novel and beautiful grown in shallow bowls of water, with enough fancy pebbles to prevent them from toppling over when in bloom. A dozen bulbs, started at intervals will give a succession of flowers throughout the winter. We have found that first-size bulbs, as generally sent out by other houses, do not flower satisfactorily, and we therefore offer only Mammoth and Jumbo sizes.

	Each	Doz.	100
Mammoth bulbs	\$0 25	\$2 50	\$20 00
Jumbo bulbs	35	3 50	27 50

GLASS BOWLS, for one bulb of Chinese Lily, 35 cts. each, \$3.50 per doz.; for 6 bulbs, 50 cts. each, \$5 per doz.

PEBBLES. Carefully screened and selected. Per quart box, 20 cts., 2 boxes for 35 cts.

JAPANESE LILIES (Cold Storage)

Many of our patrons who have greenhouse facilities are desirous of planting bulbs of some of the varieties of Japanese Liliiums during the summer months for flowering during the late autumn and Christmas time and to these we offer the following varieties: *L. speciosum album*, or the pink form, *Magnificum* (flowers in 5 months).

L. speciosum album. White. 9- to 11-inch bulbs (50 per case)..... Per case \$25 00

L. speciosum magnificum. Pink. 9- to 11-inch bulbs (50 per case).... 25 00



Chinese Sacred Lily

CROCUS (Extra-large Bulbs)

Crocuses, among the earliest bulbs to flower, are most effective when planted in masses on the lawn, or arranged in three or four rows of one color in the border. They are perfectly hardy, and may be left in the ground for three or four years after planting, without being disturbed. The best method is to scatter the bulbs about the lawn and use an ordinary garden dibble or "Slim Jim" trowel, inserting several bulbs in each spot. This makes a very pretty effect in early spring, and the foliage and tops may be safely cut along with the grass when the first mowing is made. They are very ornamental when flowered in pots of eight to ten bulbs to a 5-inch size. They will not flower if exposed to heat, nor must too severe forcing be attempted. After potting set bulbs in a cool cellar and water well. Leave them about six weeks until they are thoroughly rooted and then bring to the light of the conservatory or sunny window. Care should be taken to cover the bulbs about 1 inch, whether planted outdoors or in pots, as planting too deep causes them not to flower.



Giant-flowering Crocus, Kathleen Parlow

Any of the following, 40c. per doz., \$3 per 100, \$25 per 1,000.

Purpurea Grandiflora. Best dark blue.

Julia Culp. Large-flowering purple.

Kathleen Parlow. Purest white; fine large flowers.

La Majestueuse. White, striped purple.

Mont Blanc. An old favorite; large; pure white.

Yellow Mammoth. The largest flowering sort of this color.

S. & W. Co.'s Special Mixture. A special mixture of all colors and shades. 40 cts. per doz., \$3 per 100, \$25 per 1,000.

SPIREA

November delivery

This beautiful pot plant, usually grown by the florist for Easter, we are able to offer in three named varieties, in clumps suitable for growing in 6-in. pots.

Gladstone. Large spikes of pure white flowers, borne on strong stems 18 inches high.

Queen Alexandra. A popular variety on the order of Gladstone, but of a pale pink color.

Peach Blossom. A very lovely shade of peach-blossom pink. A very free-flowering variety.

Strong Clumps of any of the above 3 varieties, \$1 each, \$10 per doz., \$75 per 100

GIANT FREESIAS

Without doubt the most sweetly scented flower grown; a single bloom permeates the living-room with its delicate perfume. Although they are quite popular and very easily raised, we would suggest the following treatment:

Procure the bulbs as early as possible, and plant them in successive batches from August to October, using from six to twenty-five bulbs for a single pan. The soil should be a mixture of loam, to which must be added leaf-mold and sand. The bulbs planted early, say August and September, may be placed outdoors in a sheltered spot until cold weather sets in; of course they must be regularly watered and kept growing all the time. In October, before frosts appear, the pots should be placed in frames, if possible, or near the window of an unheated room. Not before November must the young plants be brought to gentle heat, and if thus cared for they will flower perfectly in January. The foliage of the Freesias is very fine and slender and must be supported with light stakes placed around the outer edge of the pans. The glistening, pure white flowers are borne on long stems, and are very valuable for cutting.



A field of colored Freesias as grown in California

S. & W. CO.'S IMPROVED PURITY

Through painstaking effort our grower of Freesia Purity has maintained such a quality in our strain of this very desirable cut-flower by careful selection as to justify us in offering it as an improved strain.

	Doz.	100	1,000
Monster bulbs.....	\$0 75	\$5 00	\$45 00
Jumbo bulbs.....	60	4 50	40 00
Mammoth bulbs.....	50	3 50	30 00

New and Rare Colored Freesias

Few, if any, of the newer creations in spring-flowering bulbs have been improved by the hybridist as has been the Freesia. We now have a splendid range of colored sorts which can be obtained at moderate prices on account of the supply having been increased by propagation. Our bulbs have been produced for us under contract by California's leading specialist in this lovely bulbous plant for indoor growing.

AURORA. A beautiful large-flowering yellow, suffused with orange. **\$1 per doz., \$8 per 100, \$75 per 1,000.**

CALIFORNIA. A large flower of bright golden yellow; extra-fine strong grower and long stems. One of the very finest yellow Freesias. **\$1 per doz., \$8 per 100, \$75 per 1,000.**

CARRIE BUDAU. A beautiful lavender-pink, much on the order of General Pershing, but of a more beautiful bright pink shade. The flowers are larger and the stems stronger. **\$1.50 per doz., \$10 per 100, \$90 per 1,000.**

CARMENCITA. Medium-sized flower of a beautiful orange-salmon hue, with buff shading on the lower petals. Long, wiry stems. **\$1 per doz., \$8 per 100, \$75 per 1,000.**

FISCHERI. This variety is a pure white of slightly heavier texture than Purity, borne on strong stems. **\$1 per doz., \$8 per 100, \$75 per 1,000.**

FISCHER'S SPLENDENS. The stems are long and stiff, bearing as many flowers as Purity, of a beautiful deep lavender color which seems to be well retained throughout the life of the flower. **\$1 per doz., \$8 per 100, \$75 per 1,000.**

GENERAL PERSHING. Splendid popular lavender-pink; strong grower; on long, stiff stems. **\$1 per doz., \$7 per 100, \$60 per 1,000.**

ILENA. Deep rosy lavender with white throat, deep orange blotch on lower petals. Flowers large and very attractive, on good stiff stems. **\$1.50 per doz., \$10 per 100, \$95 per 1,000.**

JUNE MICHELSEN. Large flowering deep rose-pink with light blush throat; three lower petals are veined purplish crimson with a deep yellow blotch on center petal. Good stiff stem and strong constitution. **\$1.50 per doz., \$10 per 100, \$95 per 1,000.**

MENDOTA. A new giant yellow Freesia par perfection; splendid clear color; extra strong, vigorous growth; long sturdy stems, making it a valuable cut-flower. **\$1.75 per doz., \$12 per 100.**

MRS. MARC PETERS. A very attractive deep rosy salmon with lower petals blotched orange and yellow. Flowers are of good size and open up well. It is a good keeper. **\$1.75 per doz., \$12 per 100.**

OLIVETTE. Bright carmine-red, with light yellow throat. Lower petals have a deep yellow blotch with crimson veins. Very profuse bloomer. **\$1.50 per doz., \$10 per 100, \$95 per 1,000.**



S. & W. Co.'s Lily-of-the-Valley

LILY-OF-THE-VALLEY

We import especially from abroad each year large quantities of Lily-of-the-Valley in pip form as well as in clumps. If you are planning on making a bed of Lily-of-the-Valley in some shady place in your garden, you will find the planting of clumps quite the easiest method. We carry pips principally for those of our patrons who wish to grow them in pots or flats indoors.

SUPERIOR LILY-OF-THE-VALLEY PIPS

November Delivery

In judging the price of our Lily-of-the-Valley, please remember that the best is the cheapest. Our Valley is positively among the best. Is bought at open prices, with instructions for a selection of the best-developed pips. Our long experience and large importations have commanded this extra selection. Introduced a few years ago, it has now become famous, being forced very extensively by a large number of celebrated Lily-of-the-Valley growers. Our Lily-of-the-Valley produces strong spikes of flowers, about 15 inches in height, bearing from twelve to twenty extra-large, pure white bells, which are delightfully fragrant. For forcing, these pips are the very best that can be planted. **25 pips \$2, 100 pips \$7, 250 pips \$16, 500 pips \$30, 1,000 pips \$55.**

LILY-OF-THE-VALLEY CLUMPS

For Outdoor Planting

Our Lily-of-the-Valley Clumps are extra-selected, well grown and, if planted outdoors by the middle of April, will flower splendidly during May. If grown under the proper conditions, these clumps will increase rapidly, and every spring produce a profusion of dainty flowers. Extra-strong clumps, **50 cts. each, \$5 per doz., \$35 per 100.**

HARDY LILIES

We especially recommend deep planting, say, from 6 to 8 inches; varieties like *Speciosums* require at least 8 inches, with an ample amount of sand beneath the bulb to insure proper drainage. Cover the beds with leaves or litter during winter. Lilies thrive well in borders, formal gardens or shrubbery, and usually flower at a time when the shrubbery has ceased blooming, adding increased interest. The following varieties have proved to be sorts that may be planted in the fall or spring with excellent results. We frequently receive orders for *Lilium candidum* for spring delivery. This Lily arrives from France in September, and must be planted by November 1.

Most Lily Bulbs, being of late maturity, do not arrive in our country until October and November, which is conceded to be the best time to plant. Where the ground is liable to freeze before late Lilies arrive, it should be mulched with leaves or manure.

LILIUM CANDIDUM (Madonna Lily)

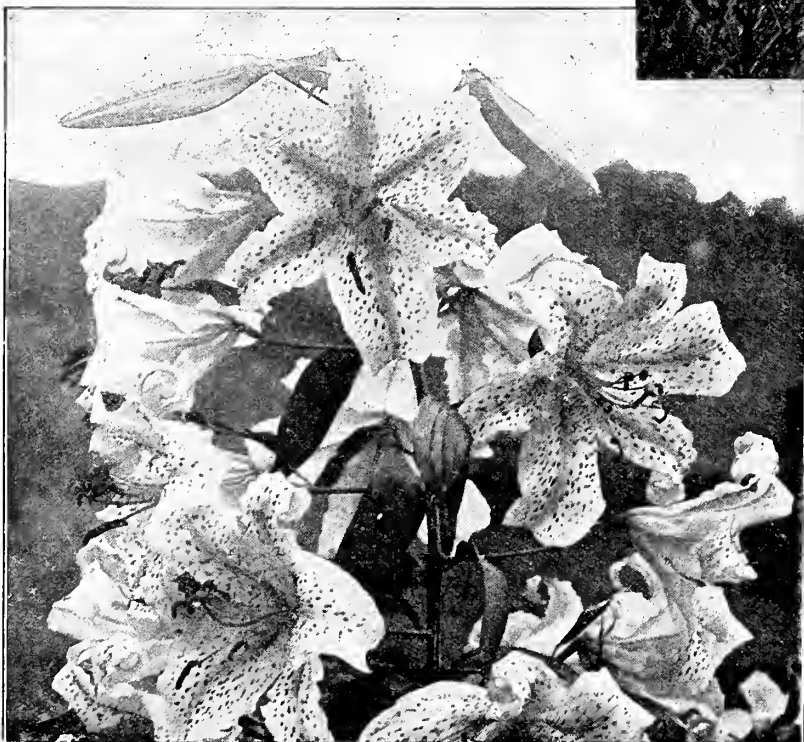
Choice Northern-Grown. Arrive in August or September

Perhaps the most popular of all the Lilies. Having practically no resting period, this Lily should be planted in September or October, so that it can root and make its fall growth. Unlike other Lilies, *Lilium candidum* makes a tuft of leaves in the fall, which must be protected by rough litter or straw. This Lily, the first to flower, is usually at its best the latter part of June and is splendid in the hardy border when planted in conjunction with delphiniums. It differs from the other varieties in that it resents deep planting. Set bulbs slightly on their side, placing a trowel of sharp builders' sand under the bulb, and cover with 2 to 3 inches of soil. The bulbs do well almost anywhere, except in heavy clay land, and are not subject to serious disease attacks, except leaf-spot, which can be controlled by spraying with Bordeaux Mixture. This Lily does not object to a little lime. Our bulbs of this splendid Lily are grown in northern France, and are of the true thick-petaled variety, which is much superior in habit and flowering qualities to that of the cheap, loose, southern-grown bulbs.

	Each	Doz.	100
First Size	\$0 35	\$3 50	\$25 00
Mammoth Bulbs.....	40	4 00	30 00
Jumbo Bulbs.....	50	5 00	40 00



Lilium candidum



Lilium auratum (Golden-rayed Lily of Japan)

LILIUM AURATUM

The Golden-rayed Lily of Japan
November and December Delivery

One of the finest and most popular of the hardy garden Lilies. It thrives best in locations where the lower portion of the plant will be partially sheltered from the hot sun, as among peonies or herbaceous plants in the hardy border, where groups of six to twelve of these Lilies produce a stately and magnificent effect. The flowers are pure white, thickly studded with crimson spots, while through the center of each petal runs a clear golden band. Fully expanded, the flowers measure nearly a foot across, are produced abundantly from June to October, and possess a most delicious fragrance. 3 to 5 feet.

	Each	Doz.	100
9 to 11 in. in circum.....	\$0 45	\$4 50	\$35 00
11 to 13 in. in circum.....	65	6 50	50 00

LILIUM REGALE (A Regal Beauty)

October Delivery

The flowers are white, slightly suffused with pink, with a beautiful shade of canary-yellow at the center, blending out part way up the trumpet. The fragrance is fascinating, similar to the jasmine. A splendid hardy Lily for the garden, flowering about July 1. Well-grown bulbs often produce five to eight blooms. 75 cts. each, \$7.50 per doz., \$60 per 100.



Lilium speciosum magnificum

Lilium speciosum magnificum

Oriental Orchids. November and December Delivery

Words cannot describe the beauty of this variety. Frosted white, spotted, clouded and bordered with deep pinkish crimson. A much superior variety to the Roseum, Rubrum or Melpomene of the Speciosum type. For the border, among hardy plants or naturalized among rhododendrons, this is an equal favorite with the *Lilium auratum* offered on the previous page. Splendid for pot culture as well. Blooms outside during August.

9 to 11 in. in circum.....	Each	Doz.	100
	\$0 45	\$4 50	\$35 00
11 to 13 in. in circum.....	65	6 50	50 00

Lilium speciosum album Nov. and Dec. Delivery

The white Speciosum, which is usually grown with Magnificum and *Lilium auratum*, is a very dainty Lily.

8 to 9 in. in circum.....	Each	Doz.	100
	\$0 45	\$4 50	\$35 00
9 to 11 in. in circum.....	65	6 50	50 00

OTHER HARDY LILIES October Delivery

HANSONII. Attains the height of 3 to 5 feet. Reflexed blossoms 2 inches across; petals bright orange-yellow, faintly spotted brown, eight to twelve in a cluster. Flowers in June or early July. **75 cts. each, \$7.50 per doz., \$60 per 100.**

HENRYI. Similar to Speciosum. Beautiful orange-yellow flowers with a green band. Hardy and easy to grow, blooming in August and September. **75 cts. each, \$7.50 per doz., \$60 per 100.**

HUMBOLDTII. This beautiful Californian Lily bears its attractive drooping flowers in triangular clusters of brilliant golden yellow, spotted with purple on the reflexed petals. Prefers rich well-drained soil so as to permit the basal roots to penetrate easily. Blooms in June and July. **75c. ea., \$7.50 per doz., \$60 per 100.**

PARDALINUM. A California variety bearing twelve to thirty flowers on stems 4 to 6 feet high, bright orange, spotted dark crimson. Flowers in July. **40 cts. each, \$4 per doz., \$30 per 100.**

SUPERBUM. A native type growing 3 to 6 feet high, frequently bearing twenty to thirty flowers of a brilliant orange-red. Blooms in July. **30 cts. each, \$3 per doz., \$20 per 100.**

TIGRINUM, Single (Single Tiger Lily). Orange-red, spotted black. **30c. each, \$3 per doz., \$20 per 100.**

TIGRINUM, Double (Double Tiger Lily). **30 cts. each, \$3 per doz., \$20 per 100.**

LILY BULBS FOR INDOOR GROWING

CALLA LILIES

These like a stiff, clayey soil with a small quantity of shredded cow-manure. Bulbs should be set with the crown, or top, protruding just above the surface. When in growing condition, warm water given several times during the week will hasten the flowering period and increase the number of blooms. When using the large-sized bulbs, plant but one in a pot; smaller ones, two. We call especial attention to the Yellow Calla, which is one of the grandest varieties in cultivation, and most valuable for house or conservatory decoration. See the description below. Plant Callas indoors only in the fall of the year.

WHITE CALLA LILY—

	Each	Doz.	100
Jumbo size	\$0 50	\$5 00	\$40 00
Mammoth size	40	4 00	30 00
First size	25	2 50	20 00

YELLOW CALLA LILY. A grand novelty—one that should be planted extensively. The deep golden yellow flowers are truly magnificent and produced in abundance. The green foliage is spotted creamy white, which adds to its beauty.

	Each	Doz.	100
First-size bulbs	\$0 40	\$4 00	\$30 00
Mammoth bulbs	50	5 00	40 00

EASTER LILIES

We offer three types of the Longiflorum Lily usually grown by the florist. Of the three types we recommend *Lilium formosum* as the best for private conservatory growing.

LILIAM HARRISII—

These bulbs usually arrive from Bermuda in July.

	Each	Doz.	100
7 to 9 inches in circumference.....	\$0 60	\$6 00	\$45 00
9 to 11 inches in circumference.....	90	9 00	70 00

L. LONGIFLORUM FORMOSUM—

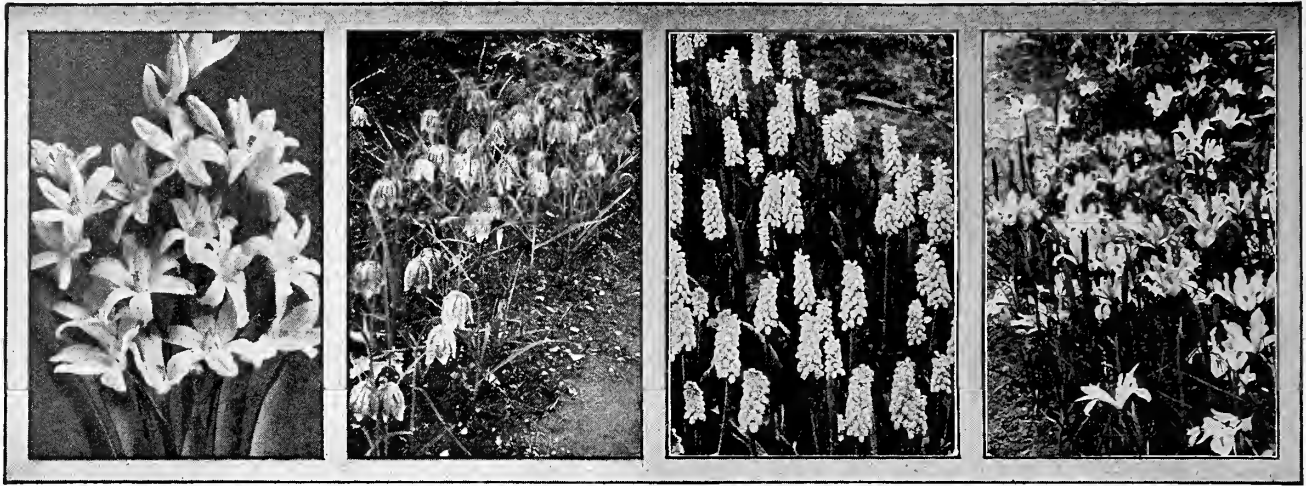
We have contracted for and expect some of each of the following sizes about Sept. 1.

7 to 9 inches in circumference.....	50	5 00	40 00
9 to 10 inches in circumference.....	75	7 50	60 00
10 to 12 inches in circumference.....	90	9 00	70 00
11 to 13 inches in circumference.....	1 00	11 00	80 00

L. LONGIFLORUM GIGANTEUM—

We have contracted for and expect some of each of the following sizes to arrive October or early November.

7 to 9 inches in circumference.....	40	4 00	30 00
9 to 10 inches in circumference.....	55	5 50	45 00
10 to 12 inches in circumference.....	75	7 50	60 00



Chionodoxa Luciliae

Fritillaria Meleagris

Grape Hyacinths

Spanish Iris

ANEMONES (Windflower)

These popular flowers of French origin are exceedingly useful as a decorative plant for house or garden, and fine for cutting. If planted outdoors in the fall they must be well protected with leaves or other litter; they may also be planted in the spring in well-drained soil, and will flower during the summer, starting in May. When planted in pots, place twelve or more in a cluster and store away, if possible, in a coldframe until February 1; if carefully watered, when brought into the house they will flower abundantly.

Excelsior Mixture. We consider this the finest strain of single-flowering Anemones as yet raised. The plants are taller in growth than the St. Brigid and more single. They contain many fine shades of blue, white, and scarlet. \$1 per doz., \$7.50 per 100.

CHIONODOXA (Glory-of-the-Snow)

An early-flowering spring bulb for borders or rockery. Produces flower-spikes bearing ten to fifteen scilla-like flowers. Perfectly hardy and should be planted close together for effect.

Luciliae. Deep blue, with a white center. Selected mother bulbs, 60 cts. per doz., \$4 per 100, \$35 per 1,000.

Luciliae alba. Beautiful white form of the above. 75 cts. per doz., \$6 per 100, \$55 per 1,000.

Sardensis. The gentian-blue; very striking. Selected mother bulbs, 60 cts. per doz., \$4 per 100, \$35 per 1,000.

DIELYTRA (Dicentra spectabilis)

Bleeding Heart or Seal Flower

An old-fashioned favorite, with long racemes of graceful heart-shaped pink flowers that are always attractive. It is used largely for forcing, but is also excellent for the garden border and especially valuable for planting in the shade. A splendid pot-plant for winter blooming in the greenhouse or conservatory. Strong clumps, 50 cts. each, \$5 per doz., \$35 per 100.

ERANTHIS HYEMALIS (Winter Aconite)

Early in spring the golden blossoms look charming, resting on an emerald-green cushion of leaves, and forming a striking contrast to the snowdrops, scillas, and chionodoxas. The foliage remains long after the flowers, making the plant especially valuable in moist situations, such as under trees, which the Winter Aconite enjoys, and where few other flowering plants will thrive. 3 to 8 inches high. 50 cts. per doz., \$3.50 per 100, \$30 per 1,000.

FRITILLARIA IMPERIALIS

(Crown Imperials)

Well-known hardy border plants, bearing clusters of immense, pendent, bell-shaped flowers, surmounted with a tuft of green leaves. They are excellent for hardy borders and may be left undisturbed for years.

Aurora. Orange \$0 35 \$3 50 \$25 00
Crown on Crown. Several whorls of red flowers, one above the other 35 3 50 25 00

FRITILLARIA MELEAGRIS

Singular, dwarf, spring-flowering plants, bearing large, pendent bell-shaped flowers of various colors, in yellow, white, black, purple, striped and splashed, and checkered in the most curious way. They are invaluable for pot culture, and exceedingly pretty when grown in large groups in the garden border or wild garden in a dry situation.

	Doz.	100	1,000
Alba. White.....	\$1 00	\$8 00	\$75 00
Calypso. Purple.....	1 00	8 00	75 00
Mixed. Select mixtures.....	80	6 00	55 00

GRAPE HYACINTHS

Very beautiful little flowers for planting in masses, either in shade or where exposed to the sun. When planted out in herbaceous borders, where they can be left undisturbed, they do exceedingly well, each year adding to their already profuse-blooming qualities. Bloom outdoors during May. They are also excellent for pot culture.

Heavenly Blue. This variety is the largest and best of the Grape Hyacinths. The bells are large and form a fine truss. Splendid effects are produced by massing in the garden or border. 50 cts. per doz., \$3.50 per 100, \$30 per 1,000.

Album. A very beautiful white form of the above and excellent to use for contrasting with Heavenly Blue. 85 cts. per doz., \$6 per 100, \$55 per 1,000.

BULBOUS IRISES (Spanish and Dutch)

We are listing below what we believe to be the best distinct colors in Spanish and Dutch Irises, as well as several hybrid forms, as Filifolia and Tingitana. They are excellent for growing under glass and may be grown in the garden also. When planted outdoors they should be covered with a heavy mulch and the bulbs planted in a well-drained border, about 5 inches deep. They bloom outdoors in the vicinity of New York late in May.

	Doz.	100	1,000
Anton Mauve. Very popular, splendid Dutch Iris. It is a uniform soft blue, and the flower very large and substantial.....	\$0 85	\$6 00	\$55 00
Cajanus. Considered as being the finest uniform bright yellow Spanish Iris.....	85	6 00	55 00
Frans Hals. Falls pale primrose; standards pale blue.....	85	6 00	55 00
Hart Nibbrig. A bright clear blue, said to be the finest of its color.....	85	6 00	55 00
Heavenly Blue. Splendid bright blue of the Spanish Iris.....	85	6 00	55 00
Imperator. Popular for indoor growing. It is rich deep dark blue and a strong grower; a magnificent specimen when well grown... I	00	8 00	75 00
King of the Whites. The best pure white Spanish Iris.....	85	6 00	55 00
Ophir d'Or. On the order of Cajanus in our list, but of a deeper tone of pure yellow... I	85	6 00	55 00
Thunderbolt. Beautiful dark bronze, golden blotch. One of the finest Spanish Irises... I	85	6 00	55 00
Tingitana. Similar to Imperator, but the flower is a shade lighter blue. It is excellent for pot culture; if well rooted and allowed to come gently will flower indoors in March.. I	75	12 00	100 00



Snowdrops



Ranunculus



Scilla nutans

GLADIOLUS COLVILLEI

Delivery in October and November

- Blushing Bride.** A very delicate pink with bright carmine blotch in the throat. 80 cts. per doz., \$7 per 100, \$60 per 1,000.
Peach Blossom. A very lovely shade of soft pink on the order of the Killarney rose. 80 cts. per doz., \$7 per 100, \$60 per 1,000.

IXIAS

The Ixia is a beautiful little winter-flowering bulb, with long, slender, graceful spikes of bloom. The colors are rich, varied and beautiful, the center always differing in color from the other parts of the flower, so that the blossoms, expanding in the sun's rays, present a picture of gorgeous beauty. Very desirable for pots.

	Doz.	100
Althæa. Large; white, with purplish carmine eye.....	\$0 85	\$6 00
Aurantiaca major. Golden yellow, with large dark eye.....	85	6 00
Craterioides major. Bright scarlet; very early; forces well.....	1 30	10 00
Hubert. Deep maroon; very beautiful.....	70	5 00
Mozart. Pink; lovely color.....	85	6 00
Finest Mixed	50	3 50

OXALIS

An unrivaled winter-flowering pot-plant of the easiest culture, succeeding with everybody

This is one of the finest flowering plants for pot culture that we have ever seen. It is such a strong, luxuriant grower that five or six bulbs will be sufficient for a 6 or 8-inch pot. Place in a dark, cool position for several days to root thoroughly, and remove to a sunny situation in the window or conservatory in a temperature of about 60 degrees Fahr., and the great profusion of bloom produced in uninterrupted abundance for weeks will astonish and delight you.

Large-flowering. We have a very fine strain of these Oxalis. Flowers are large, and they may be had in blossom, by successional plantings, from October until May. We have four colors—Yellow, Pink, White, and Lavender. 50 cts. per doz., \$3.50 per 100.

RANUNCULUS

The bulbs of Ranunculus resemble tiny clumps of dahlia roots. They look as much like spiders as anything. The flowers are extremely double, almost globular, regular in outline, often exceed 2 inches in diameter, and are to be had in all the colors except blue. The colors are bright, clear, and pure.

CULTURAL DIRECTIONS

The Ranunculus requires much the same consideration as the anemone. Actually, it is less hardy. Except in sheltered spots, say near a house where it can lie fairly dry and be protected, the Ranunculus is not for eastern gardens. It is splendid for indoor culture, however, doing well in a cool greenhouse and may be carried over in a coldframe if protected with dry leaves or mats. It may also be planted in pots or boxes and kept in a well-protected frame until February, after which a cool greenhouse or sun parlor will ensure early bloom. It will not stand heat, therefore cannot be recommended as a room subject.

French Mixed. We offer a mixture of all colors of the French Ranunculus at \$1 per doz., \$7 per 100, \$65 per 1,000.

SNOWDROPS

These elegant little flowers, the first to open in spring, should be found in every garden, not only because they are the earliest spring flowers, but because they are the loveliest. The Snowdrop thrives in almost any situation or soil, and should be planted as early in the autumn as possible, as they suffer much if left long out of the ground.

	Doz.	100	1,000
Single Snowdrops. Selected bulbs.....	\$0 70	\$5 00	\$48 00
Double. Selected bulbs.....	80	6 00	58 00

SCILLAS

(Wood Hyacinth, Siberian Squill, or English Bluebell)

Scilla campanulata (Wood Hyacinth)

Bears spikes, 15 inches high, of bell-like flowers, during early May. Plant 5 or 6 inches deep in shady situations. Very effective for borders; will grow under fir or pine trees.

- Alba maxima.** Clear white, with very fine, large bells. 75 cts. per doz., \$5 per 100, \$45 per 1,000.
Blue Queen. Erect spikes of porcelain-blue flowers; strong grower. 75 cts. per doz., \$5 per 100, \$45 per 1,000.
Excelsior. Bright deep blue, with large bells. 75 cts. per doz., \$5 per 100, \$45 per 1,000.
Rose Queen. Bells of soft lilac-rose; very pretty. \$1 per doz., \$7.50 per 100, \$70 per 1,000.

Scilla sibirica (Siberian Squill)

Spikes 3 to 4 inches high, of small, drooping, bell-like flowers. Fine for massing in borders or naturalizing. Plant 3 to 4 inches deep. Blooms in April.

- Blue.** Splendid for massing. Jumbo bulbs, 80 cts. per doz., \$6 per 100, \$58 per 1,000.
White. A variety sometimes used for interspersing with the blue sorts. 80 cts. per doz., \$6 per 100, \$58 per 1,000.

Scilla nutans (English Bluebell)

The flowers of this lovely Scilla are similar in type to *S. campanulata* listed above, but the spikes are not as tall and are more arching in character. Visitors to the English countryside during daffodil time will doubtless remember this pretty flower which is a native of their woodlands and blooms the same time as the daffodils. 40 cts. per doz., \$3 per 100, \$25 per 1,000, \$225 per 10,000.

TRITONIA CROCATA

This beautiful Cape Bulb is produced in California and is usually treated as a greenhouse bulb and handled like the freesia, which it somewhat resembles in its foliage. The flowers are borne on slender stems in racemes and are about 2 inches across. The color is a lively shade of orange-red. Splendid pot-plant. 80 cts. per doz., \$6 per 100, \$50 per 1,000.

German Iris, Japanese Iris, Herbaceous Peonies

The Best Three Hardy Perennials Which do Best if Planted in the Autumn

We offer below 11 varieties of German Iris, also the Siberian Blue, 8 varieties of Japanese Iris, and 20 of the best varieties of Herbaceous Peonies.

GERMAN IRIS (*Iris germanica*)

- Aurea.** Rich chrome-yellow. The finest pure yellow. 30 cts. each, \$3 per doz., \$20 per 100.
- Fairy.** Standards and falls white, delicately bordered and suffused soft blue. Very beautiful. 30 cts. each, \$3 per doz., \$20 per 100.
- Khedive.** Standards beautiful soft lavender; falls white, veined brown. 30 cts. each, \$3 per doz., \$20 per 100.
- Lohengrin.** Standards and falls are a uniform shade of violet-mauve. 30 cts. each, \$3 per doz., \$20 per 100.
- Loreley.** Standards light yellow; falls ultra-marine blue. 20 cts. each, \$2 per doz., \$15 per 100.
- Mother of Pearl.** A uniform soft lavender with a faint creamy undertone. Large flowers of exceptional substance and perfect form. The finest new Iris. \$1 each, \$10 per doz., \$60 per 100.
- Pallida, Albert Victor.** Standards soft blue; falls beautiful lavender. 30 cts. each, \$3 per doz., \$20 per 100.
- Pauline.** Standards and falls are a rich pansy-violet. A variety of decided perfume. 20 cts. each, \$2 per doz., \$15 per 100.
- Princess Victoria Louise.** Standards sulphur-yellow; falls rich plum, bordered cream. 30 cts. each, \$3 per doz., \$20 per 100.
- Queen Alexandra.** Standards fawn, shot with lilac; falls bronze; yellow beard. 30 cts. each, \$3 per doz., \$20 per 100.
- Queen of May (Pallida).** Tall grower; lovely shade of soft rose-lilac. 35 cts. each, \$3.50 per doz., \$25 per 100.
- Siberian Blue.** Clear sky-blue. While not of a German Iris type, flowers same time and is a wonderful border variety. 30 cts. each, \$3 per doz., \$20 per 100.

JAPANESE IRIS

The Japanese Iris usually flowers after the German. They are much admired on account of their variety of color and large size. We offer eight distinct varieties. Six-petal varieties are termed double; three-petal varieties, single.

- Azure.** Double. Immense flower, of mauve blue, with a darker halo surrounding the yellow blotch at the base of the petals.
- Blue Bird.** Single. Deep velvety blue.
- Gold Bound.** Double. Pure white. One of the best.
- Grace Sperling.** Single. Hortense-violet; petaloid stigmas light Hortense-violet. Very early. Extra fine.
- Indo.** Single. Broad, wavy petals of great size; color darkish blue.
- Mars.** Single. Reddish purple; striped and blotched white.
- Mount Hood.** Double. Light blue shaded darker, bright orange center.
- Pyramid.** Double. Violet-purple, veined white in center of each petal.

Any of the above, 50 cts. each, \$5 per doz., \$35 per 100



German Iris

HERBACEOUS PEONIES

We offer twenty fine varieties of this beautiful hardy perennial. November will make strong plants next year. Specialists in this lovely flower prefer fall to spring planting.

- Albatre.** Milk-white, shaded ivory; center petals tinged lilac. \$1 each, \$10 per doz.
- Albert Crousse.** Large; compact, rose-white, flecked crimson. \$1.25 each, \$12.50 per doz.
- Alexandre Dumas.** Light violet-rose; creamy white collar of narrow petals. 75 cts. each, \$7.50 per doz.
- Couronne d'Or.** Pure white; tuft of center petals tipped carmine. 75 cts. each, \$7.50 per doz.
- Duchesse de Nemours.** White crown; sulphur-white collar. 75 cts. each, \$7.50 per doz.
- Felix Crousse.** Large, globular, typical bomb type. Brilliant red. 75 cts. each, \$7.50 per doz.
- Festiva Maxima.** Large globular type; pure white, center prominently flecked crimson. Popular variety for cut flowers. 75 cts. each, \$7.50 per doz.
- James Kelway.** Very large, loose rose type. Rose-white, changing to milk-white, tinged yellow at base of petals. \$1.25 each, \$12.50 per doz.
- L'Indispensable.** Lilac-white, shading to pale violet-rose toward center. \$1 each, \$10 per doz.
- Livingstone.** Pale lilac-rose, with silver tips; central petals flecked carmine. \$1.25 each, \$12.50 per doz.

The roots are 3 to 5-eye divisions, and if planted during October and November will make strong plants next year. Specialists in this lovely flower prefer fall to spring planting.

- Marguerite Gerard.** Pale hydrangea-pink, fading to nearly white; central petals flecked carmine. \$1 each, \$10 per doz.
- Mme. Calot.** Pale hydrangea-pink; center shading darker; collar tinged silver. \$1 each, \$10 per doz.
- Marie Lemoine.** Pure white with cream center; carmine tip. \$1 each, \$10 per doz.
- Mme. Coste.** Guards and center hydrangea-pink; collar cream-white. 75 cts. each, \$7.50 per doz.
- Mme. Crousse.** Pure white; center flecked crimson. \$1 each, \$10 per doz.
- Mme. de Verneville.** Blush when opening, fading pure white; prominent carmine specks. 75 cts. each, \$7.50 per doz.
- Mons. Dupont.** Milk white center, splashed crimson. \$1 each, \$10 per doz.
- Mons. Jules Elie.** Glossy lilac-pink. \$1.50 each, \$15 per doz.
- Philomele.** Guard bright violet-rose; center of narrow amber-yellow petals. \$1 each, \$10 per doz.
- Solange.** Outer petals delicate lilac-white, deepening toward the center, with a salmon shading. This variety is regarded by the American Peony Society as one of the best three in the world today. \$5 each, \$60 per doz.

ORDER SHEET

Dutch, French and Japanese Bulbs · Advance Bulb Catalogue, 1927

We, Stumpp & Walter Co., give no warranty, express or implied, as to description, quality, productiveness or any other matter of any seeds, bulbs, or plants we send out, and will not be responsible for the crop.

STUMPP & WALTER CO.

30 and 32 Barclay St., New York

Name _____

P. O. Box, Street
or Rural Delivery _____

Post Office _____ State _____

Station or Express Office _____
Only if different from Post Office

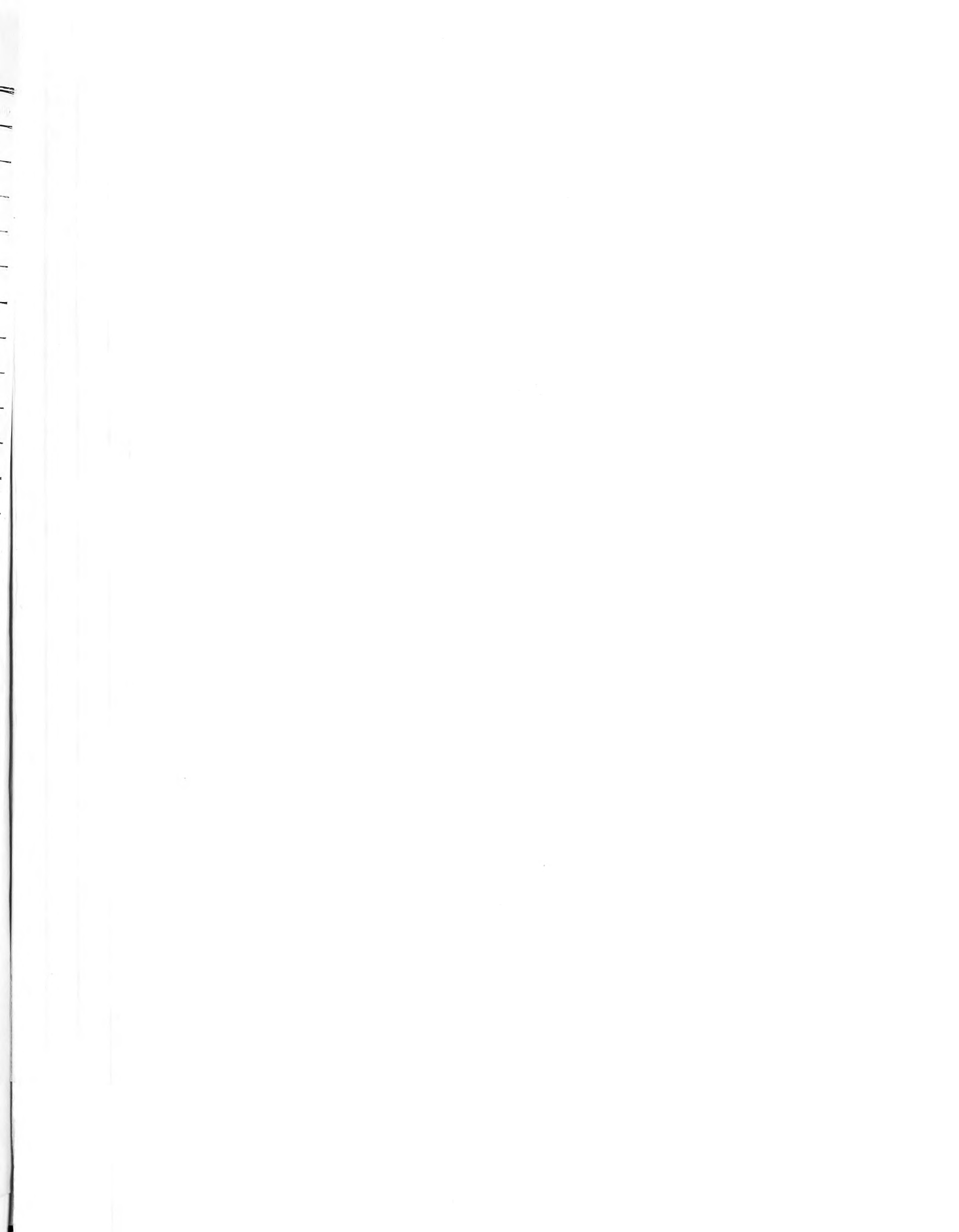
Send by _____
State if wanted by Mail, Express or Freight

Superintendent or Gardener _____
That we may enter for Catalogues

Date _____ 1927
AMOUNT ENCLOSED
\$ _____
Advance Bulb Offering for Orders up to July 15th

QUANTITY	ARTICLES WANTED	PRICE

PLEASE BE SURE TO FILL IN YOUR NAME AND ADDRESS ABOVE





Flowers in Your Home From Christmas to Easter

ONE of the most inspiring influences of the home is the flowers one grows. You can have an abundance of bulbs in flower from before Christmas until Easter if you plant a few bulbs suggested on this page. Six Paper-White Narcissus bulbs planted in a dish of pebbles will flower in six weeks. The best Paper-White Narcissus bulbs cost \$8 per 100, and these flowers are sold in the florists' shops at \$2 to \$2.50 per dozen. You can grow your own and not only enjoy the fun of it, but save three profits—the grower's, the wholesale cut-flower dealer's, and the florist's.

SOIL AND CULTURE. The soil for potting bulbs should be light and rich; one-half good garden soil, one-fourth sand, and one-fourth rotted stable manure is about right, and this should then be thoroughly mixed and pulverized before using.

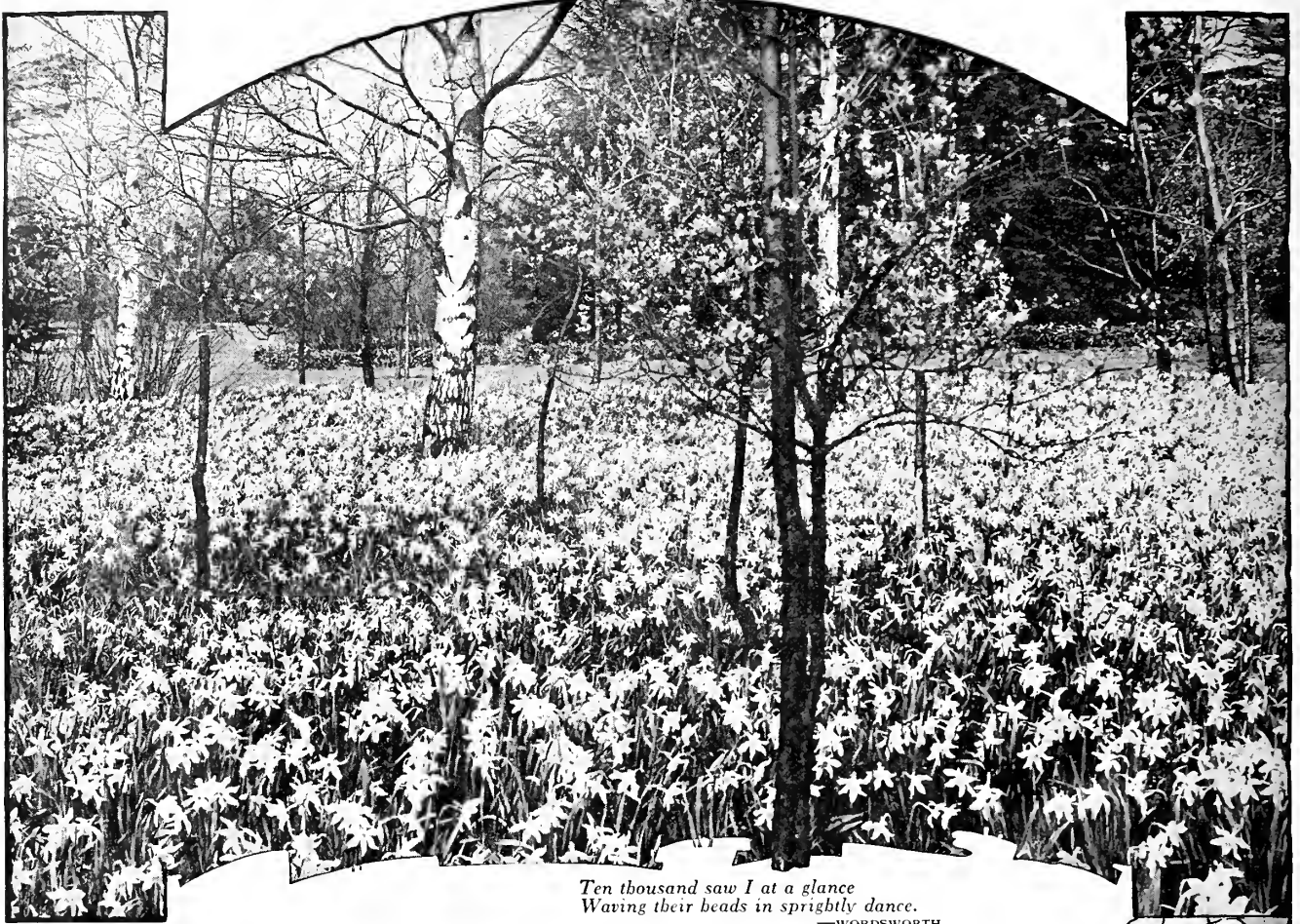
The pots, after placing part of a broken pot at the bottom to ensure drainage, should be filled to within 4 inches of the top, bulbs set in 2 to 4 inches apart, according to the variety, and then soil placed around them, just allowing the top of the bulb to protrude. After planting, water thoroughly, place in the coolest, darkest part of the cellar, away from the heat and light. Freezing will not hurt them. While in the cellar, look at occasionally and see that soil is moist not wet. **The main point to consider is to be sure they have made plenty of roots before being brought up to the living-room.** The Paper-White Narcissi, Freesias, and Crocuses offered on this page, planted October 15, may be brought to light December 1, and, in order to have them in succession, bring up a pot or pan every week until you have brought all your stock in. Early Tulips, Daffodils, and Hyacinths brought in January 1 should begin flowering from February 25 on.



Special List for Pot Culture

FREESIAS	Doz.	100
Purity. White Monster Bulbs.....	\$0 75	\$5 00
CROCUSES (Selected Bulbs)		
Purpurea Grandiflora. Blue.....	40	3 00
Kathleen Parlow. White.....	40	3 00
La Majestueuse. White, striped purple.....	40	3 00
Yellow Mammoth. Yellow.....	40	3 00
TULIPS		
Golden Queen. Golden yellow.....	1 00	7 00
Belle Alliance. Scarlet.....	85	6 00
White Hawk. Fine white.....	85	6 00
Fred Moore. Ruddy apricot.....	70	5 00
Princess Wilhelmina. Dark pink....	85	6 00

DUTCH HYACINTHS (First Size)	Doz.	100
One Bulb suggested for 5-inch pot, 4 for an 8-inch pot or pan.		
Lady Derby. Finest pink.....	\$3 50	\$25 00
La Victoire. Finest red.....	3 50	25 00
Grand Maitre. Finest blue.....	3 50	25 00
City of Haarlem. Finest yellow.....	3 50	25 00
La Grandesse. Finest white.....	3 50	25 00
NARCISSI or DAFFODILS (Very largest bulbs only)		
Paper-White. White.....	1 00	7 00
Golden Spur. Rich yellow.....	1 75	12 00
Emperor. Yellow.....	1 75	12 00
Empress. Yellow and white.....	1 75	12 00
Poeticus Ornatus. White.....	1 25	9 00
Conspicuous. Yellow.....	1 50	10 00



*Ten thousand saw I at a glance
Waving their beads in sprightly dance.*
—WORDSWORTH

SPECIAL NOTICE!

American-Grown Daffodil Bulbs

(FOR NATURALIZING)

AS WE were advised in the fall of 1923 by the Federal Horticultural Board that importation of Holland Daffodil bulbs, for commercial sale, would be restricted from entry into the United States after January, 1926, we began immediately to experiment with the production of this much-loved spring-flowering, bulbous plant in this country. After extended experiments we proved that the stock grown at our Long Island farms produced bulbs of high quality, some of the varieties producing hardy, sound, heavier stock than could be grown in Holland.

In order to encourage wider use of this splendid spring-flowering bulb, we are prepared to offer

	100	1,000	10,000
Giant Trumpet Mixed	\$8 00	\$70 00	\$650 00

Scilla nutans cærulea (ENGLISH BLUEBELL)

A splendid bulbous plant to intersperse with your naturalized daffodil planting. The English Bluebell grows about 5 to 6 inches tall and resembles the hyacinth as regards foliage and flower. The flower-spikes are made up of a dozen or more deep blue bells. Planted 3 inches deep and given a sheltered location, such as under trees or in a shrubbery border, they do well and the contrast with the yellow daffodil is very effective and lovely. We offer at moderate prices to encourage liberal planting.

Strong Bulbs, \$3 per 100, \$25 per 1,000, \$225 per 10,000

STUMPP & WALTER CO., 30-32 BARCLAY STREET
NEW YORK CITY

